

# Animals subjected to Man



Swedish feather-letter with a poultry feather in the seal - Dated 31st May, 1847

Millenniums ago Mans subjection of many species of animals began in different parts of the world and at different stages of the progress of mankind

They work for us – and for centuries – some of them for millenniums - they have been involved in revolutionary worldwide activities such as communications, commercial relations between people, science and warfare activities which have all created milestones on our path to civilization

They also provide us with food and commodities - and we use them for leisure and sport

**Plan – “Animals subjected to Man”** 2 pages

**1 - Multifarious Species contribute physically to our everyday Life in many Respects** 27 pages

- 1-0: The Domestication of Animals influenced on Mankind and changed Man's Life
- 1-1: Horses with their many Skills work hard for us
- 1-2: - and their Cousins – Donkeys and Mules – substitute them well
- 1-3: The patient Ox is *sine qua non* in many primitive Farms
- 1-4: - and the Camel – The Desert Ship – is equally important elsewhere
- 1-5: The Elephant is the largest Animal living on Land – and we tamed it
- 1-6: Other Species are indispensable for different Communities
- 1-7: - and the intelligent Dogs are at our Side

**2 - Husbandry has enabled Mankind to reach present Stage of Civilization** 19 pages

- 2-1: Some Species have helped us link the World together through Mail Services
- 2-2: Camels made the Silk Road Trade in the Middle Ages possible
- 2-3: - while other Species have participated in many Military Battles

**3 - Many Species of Mammals are vital for our Supply of Food or Commodities** 25 pages

- 3-1: The Cow is probably the most important domestic Animal
- 3-2: - but the Pig must come in second
- 3-3: - and many People rate the Horse higher – for various Reasons
- 3-4: Sheep, Goats and other Species serve us – often in rural Areas
- 3-5: And several of them provide us with vital Dairy Products

**4 - - and so are a large Number of other wildly different Species** 21 pages

- 4-1: Poultry is important in many Respects
- 4-2: Aquacultures are becoming increasingly important
- 4-3: And we breed Snails which are never in a Hurry!
- 4-4: Animals are bred in Captivity to provide us with Furs, Skin – and Pearls
- 4-5: The Honey Bees pollinate Flowers and collect Nectar for Honey
- 4-6: - - while the patient Silkworm produces Miles and Miles of Silk

**5 - We use many Species for Entertainment and Pastime** 24 pages

- 5-1: They are there for us to enjoy - in Animal Parks and Zoos
- 5-2: - and we gape at them in Circus
- 5-3: We should not forget Pets which we love – for what they are -
- 5-4: - and other Animals which we enjoy at Animal Shows
- 5-5: Cruel Bullfights incite us
- 5-6: - and Snakes handled mysteriously give us Gooseflesh

**6 - - and we can use them in sporting Events** 8 pages

- 6-1: We enjoy watching Horses hop and run – and we ride on them
- 6-2: - and we use Horses and Dogs for Hunting
- 6-3: - as well as Birds-of-Prey and fishing Cormorants
- 6-4: We put Trout into Ponds and catch them again for Fun and Competition
- 6-5: And we compete in catching Reindeer Antlers with a Lasso

**7 - - and for many other Purposes**

- 7-1: We have great many Doings – and there are Animals helping us to accomplish most 2 pages
- 7-2: - like Pigeons which are used for several Purposes

---

**Total exhibit** 128 pages



1-0

Multifarious Species contribute physically to our everyday Life in many Respects

The first Book dealing with Animal Husbandry and Bee-Keeping was written long B.C.



Letter sent from Virgil April 6<sup>th</sup>, 1891

Only 4 pre-philatelic covers are known from Virgil where a post-office operated from 1811 to 1912 when it was closed because the number of houses in the small township never exceeded more than 50

The township "Virgil" was named after the Roman Poet Publius Vergilius Maro usually called "Virgil", born in Italy year 70 BC



Virgil was the writer of the first known book concerned with Domestic Animals (Georgica 3) and Bee-keeping (Georgica 4)

Since Virgil wrote his book, the number of domestic animals has exploded



Below:  
Bromide essay - signed by the artist Barry Driscoll - -  
denomination changed to 31 p on issued stamp





Multifarious Species contribute physically to our everyday Life in many Respects  
**What would the World have been like without Domestic Animals?**



In the beginning of the agricultural revolution Man had to use his own physical power to *plough* his fields



However this changed when Man managed to begin *domesticating* various species of animals and used them for physical work and mobility



Imperforated between pair

Without the use of *domesticated animals* the world would not have reached the present stage of civilization and the world population would have been only a small fraction of what it is today



Zemstvo Novouzensk

Advertising Postal Stationery Letter Card – France - 15 Centimes - but sold for 5 Centimes - Advertisements covered the difference

<p>LES CLICHÉS des ANNONCES                  de  <b>"Jeu Missive"</b>                  Ont été établis par la  <b>CLICHERIE CENTRALE</b>                  4, rue Paul Lelong, 4</p>	<p><b>A. MARTIN</b>                  Horloger-Electricien                  PLACE de la MAIRIE  <b>PERIGUEUX</b>                  Sonnerie Electrique                  Complete. 9 fr. 75                  PILES ELECTRIQUES                  de tous Systemes                  Ecrite pour avoir tous deux gratuits</p>	<p><b>D' NIGOD</b>                  ANCIEN MEDECIN MILITAIRE  <b>DENTISTE</b>                  11, Place de l'Hotel-de-Ville, 11                  PARIS                  Traitement special des                  Affections de la BOUCHE</p>	<p>PLUS D'ANEMIEQUES!                  plus vite                  plus surs                  plus efficaces  <b>"ENIOVA"</b>                  POUR ENFANTS                  CHOS ET GROSSES FEMMES                  48, Rue de Clugnot, PARIS                  Preparer par Pharmaciens et Chimistes Indipendents</p>
<p><b>A LA BELLE JARDINIÈRE</b>                  ISIDOR LEON                  Tailleur <b>Perigueux</b> COUTURIER                  Pensionnat de Jeunes Filles dir. gé par M<sup>me</sup> Landais-Delaporte                  à VINCENTES, 9, rue de Paris (3<sup>e</sup> ROUTE DU BOIS)                  MAISON RECOMMANDÉE                  Chambres particulières pour Demoiselles étrangères</p>		<p>Spécifique <b>SCOCARD</b>                  Guérison RADICALE                  et Garantie                  de                  SIX                  Jours  <b>NECROTILON</b>                  G. SCOCARD Paris, 24, r. de Valenciennes</p>	<p><b>Paul HEMMEN</b>                  55, Rue Traversière, 55, PARIS  <b>MEUBLES ARTISTIQUES</b>                  Spécialité d'Armoires à 3 Glaces                  SYSTEME DÉPOSÉ</p>
<p><b>PHOSPHO-GUANO</b>                  AUBERVILLIERS (SEINE)                  Edmond VOILLEMEN                  Dir. de la grande Fabrique d'Engrais                  Anciennement Etabliss. COIGNET  <b>SWENEY</b> (ex) Propriétaire                  Engrais complets, Matières prem.                  Azotées, Sels, Vitrif. etc.                  Procédés brevetés S.O.S.                  Usine, Rue des Cardinaux, 8                  à AUBERVILLIERS (Seine)</p>	<p><b>TABLE à COULISSE</b>                  à 3 COLONNES PARALLELES                  SYSTEME DÉPOSÉ  <b>C. PERROT</b>                  Inventeur                  20, r. St-Nicolas, F<sup>rs</sup> St-Antoine                  PARIS                  2 Médailles d'Argent                  Visiter les Modèles                  à l'Exposition des Arts                  Décoratifs                  ARTICLES RECOMMANDÉS                  Solidité Elegance</p>	<p><b>Tissus Spéciaux pour Chasseurs</b>                  DIPLOME D'HONNEUR à BONS CONCOURS EXPOSITION 1889  <b>A. POIRET</b>                  21, Rue des Deux-Ecus, 21, PARIS                  DRAPS FRANÇAIS Extra-fine, Imperméables à l'eau, Perméables                  à l'air, Indéchirables aux bois                  Velours, Coullis, Mollétons, Draps de Livrées                  Envoi franco d'Echantillons</p>	



Multifarious Species contribute physically to our everyday Life in many Respects  
What would the World have been like without Domestic Animals?

# The Invention of the Wheel was revolutionary



The first wheel was closed and without spokes



The lighter wheel with spokes followed later



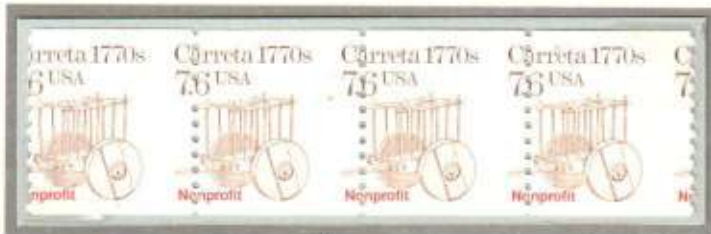
Wheels with spokes

According to archaeologists the wheel was probably invented around 8,000 B.C. in Asia



The spokes made the wheel much lighter than the closed wheel and made it easier for the draft animals to pull the carts or other equipment

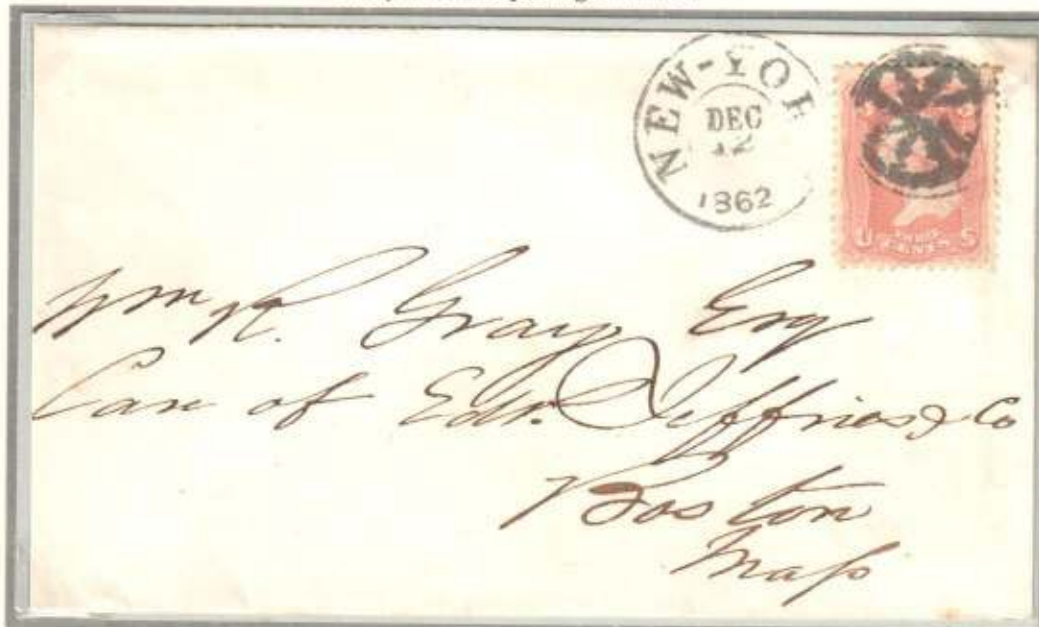
Booklet contains 10 stamps



Wheels without spokes



Fancy cancel depicting a Wheel



Multifarious Species contribute physically to our everyday Life in many Respects  
**Horses with their many Skills work hard for us**



**Tartan horse**  
*Misperforated pair*

**The history of  
 horse breeding  
 goes back millennia**

**Humans have domesticated  
 the horse as far back as  
 approximately 4500 BCE**

*The Tartan horse is believed to be the  
 ancestor of horses today*



*Misperforated*

*Red colour missing on left stamp*



The name Stoddard is of Northern Olde English pre 9th century and was originally an occupational word for a **breeder or keeper of horses**

*Cover sent from Stoddard, NH -- this town was founded in 1874 and named Stoddard in honor of the first settler,  
 Colonel Sampson Stoddard*





Multifarious Species contribute physically to our everyday Life in many Respects  
**Horses with their many Skills work hard for us**



Horses are often bred in stud farms on open fields and they are not naturally tamed from birth

It is therefore necessary to catch them and trained riders will "break" them before they can be saddled and used for riding

This task is undertaken by experienced riders



A young horse will more easily adapt to human expectations than an older one, so human handling of the horse from a very early age is generally advised

Fancy cancel depicting the "Breaking of a Horse"





Multifarious Species contribute physically to our everyday Life in many Respects  
 Horses with their many Skills work hard for us



Missing colours



Colour shift

There has always been an almost insatiable demand for horses for various purposes and during centuries they have been bred in many different races



The name of "Stuttgart" in Old High German was "stoutgarten" with "stout" meaning "mare", later cognate with the Old English term "stod" –

Modern English "stud", relating to the breeding of horses

The Old High German term "garten" referred to the compound on the site of the original settlement where the horses were bred





Multifarious Species contribute physically to our everyday Life in many Respects  
**Horses with their many Skills work hard for us**

A mural from the *Dunhuang Caves* (about 2000 years ago) shows a *saddled Horse*



But riding on *Horseback* has been practised long before that in many parts of the world

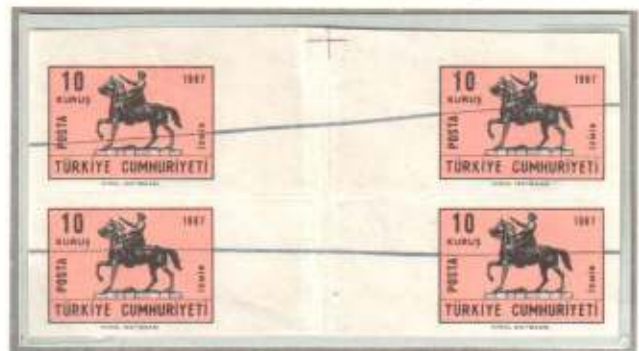
Cover sent 1882 from the town hall of the village *Sarat* in *Romania* where the main occupation of the villagers was *Horse Breeding* - The town hall enjoyed a free frank privilege



When mounting the *Horse* the rider is using *Stirrups* and the *Horse* has *Metal Shoes* on its *hoofs* for protection



Proofs



Multifarious Species contribute physically to our everyday Life in many Respects  
 Horses with their many Skills work hard for us



RRRR - Letter sent by "Edward Stabler", PM, who correctly signed the letter in upper right corner verifying his free frank privilege



A 19th century stable Grzawa

The surname "Stabler" was occupational for a person who lived and worked at horse stables  
 "Stabler" derives from the Olde French pre 7<sup>th</sup> century word "establier" – a stable



A "Stableboy"

The postal card below depicts an old Horse Stable in Northern China occupied by Japanese forces

Japanese Military Postal Card – provided by the Japanese Military Forces to be used by the soldiers during WWII





Multifarious Species contribute physically to our everyday Life in many Respects  
 Horses with their many Skills work hard for us



*RRRR - The postmaster of this small post office did not receive a datestamp from the postal administration as the need was too small. Instead of marking the mail by manuscript which would normally have been done, he arranged his own postmark which had the name Drakesville, Iowa, and his own name followed by "P.M." for "Postmaster". His name was CALVERT which is an old occupational name of a "Calf-herd" (cowboy) - ("Calf-herde" in Old English)*

*Misperforated*



*This postmark is therefore extremely rare as the number of survived letters must be small*

*This is the only one known letter from 1887*

*At the 2000 census the locality had only 185 inhabitants so in 1887 it presumably was even less*



Herds of *Cattle* are often grazing over large areas of pasture and it will be impossible to guard these by foot

On horseback it is more convenient as *Horses* can move quickly over long distances



*Postal Stationery Postcard - 6C - Portugal*





Multifarious Species contribute physically to our everyday Life in many Respects  
 Horses with their many Skills work hard for us



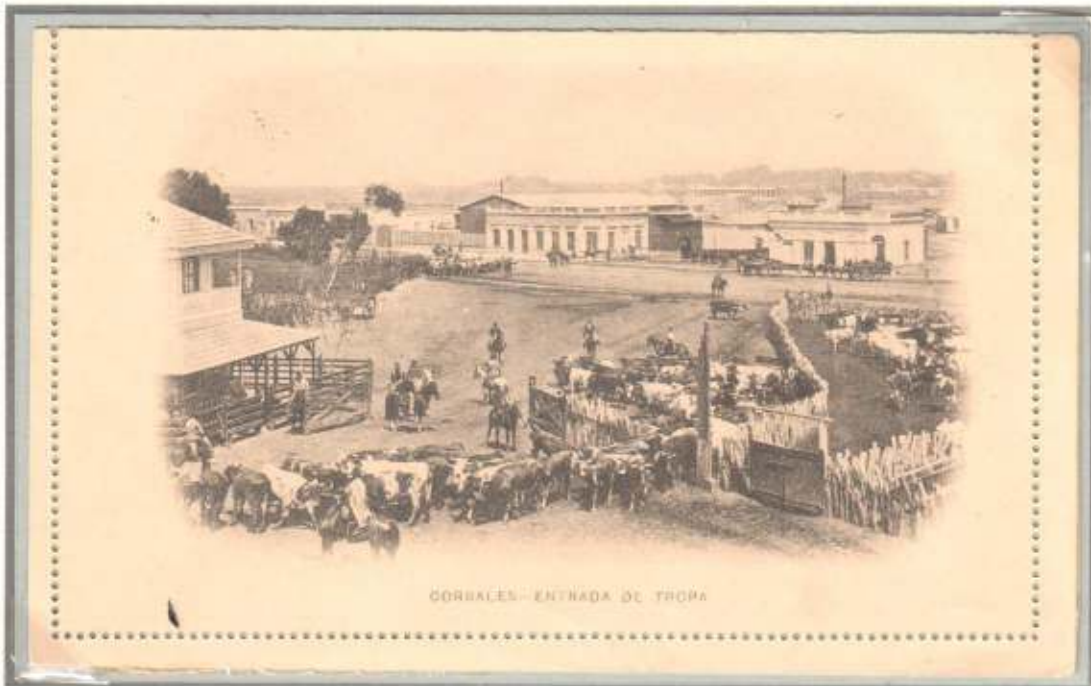
Proof in orange colour

Imperforated between stamps  
 Issued colour

Cattle grazing over large areas are looked after and protected by mounted Gauchos/Cosboys who will also lead the herds to new localities for grazing when necessary



Perforation missing at bottom



Postal Stationery Lettercard - Argentina - 4 Centavos

The *Creole Horse* of Latin America is a direct descendant of the *Horses* brought to the New World by the Spanish conquistadores during the 16<sup>th</sup> century

Misperforated block





Multifarious Species contribute physically to our everyday Life in many Respects  
**Horses with their many Skills work hard for us**



*Postal Stationery Lettercard - New Zealand - 1 P*



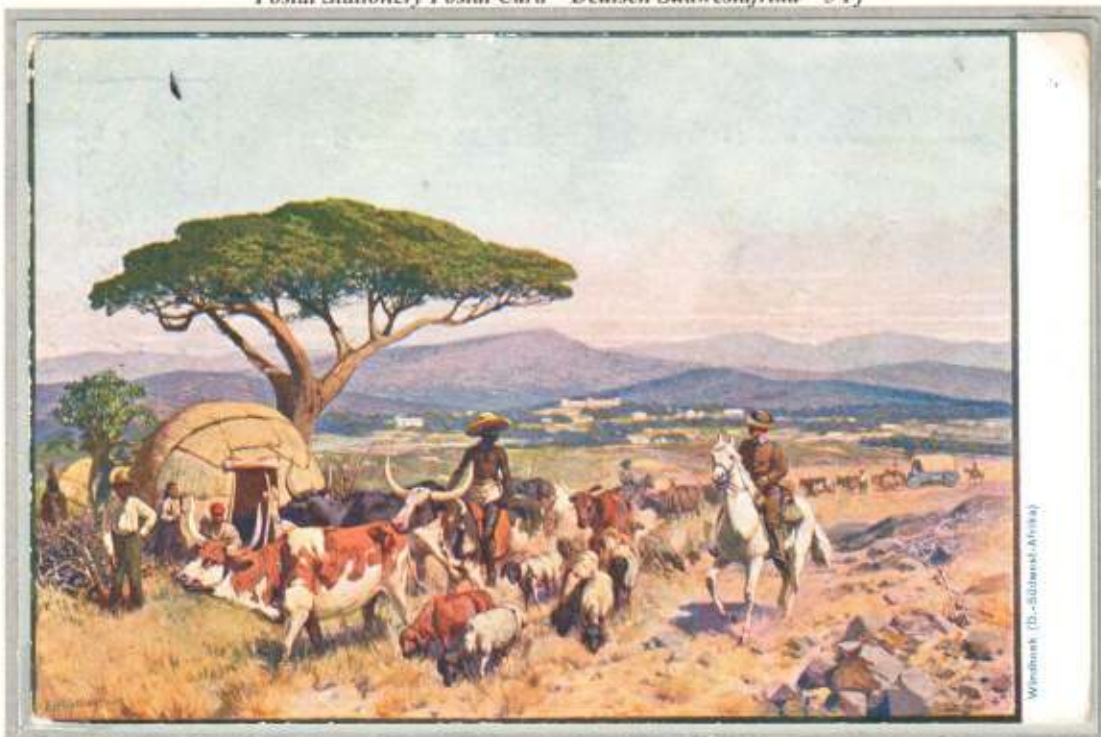
*Herds of domestic animals are driven to new pastures if the present location does not provide sufficient feed for the animals*

*This has been undertaken by cowboys on horseback*



*Bajaus cowboys – called the “Cowboys of the East”*

*Postal Stationery Postal Card – Deutsch Südwestafrika – 5 Pf*





1-1

Multifarious Species contribute physically to our everyday Life in many Respects  
Horses with their many Skills work hard for us



Folded letter sent 1872 by the Municipality of Bassano, Italy

The municipality was permitted to send mail free of postage

Riding on Horseback gives the rider some weight no matter if he is a knight on a fiery Stallion or a child riding a quiet old Horse watched by his proud parents



Left Proof



Private issued stamps for use during the British Postal Strike 1971 – service approved by the British Post



Postal Stationery Postcard (printed to private order)

Germany 5 Pfennig



1-1

Multifarious Species contribute physically to our everyday Life in many Respects  
Horses with their many Skills work hard for us



"Patent Envelope Booklet"  
Victoria 1890  
One Penny  
(printed to private order)

The envelope has a crescent cut out in the impressed stamp  
A booklet containing 16 sheets with a total of 46 advertisements was inserted in the envelope



Copy of advertisement

The inserted sheets are folded in a symmetrical form and the missing part of the stamp was impressed on these in such a way that every sheet has a part of it  
When the booklet was mailed the crescent part of the cancel was placed inside the envelope in order to make a complete impressed stamp  
Small messages could be included in the envelope together with the booklet and the envelope/booklet was sold to the public at half face value



Complete impressed stamp

Many types of Carts, Carriages and Coaches have been constructed over the time and used for various purposes



Postal Stationery  
Postcard  
Greece  
10L for international mail

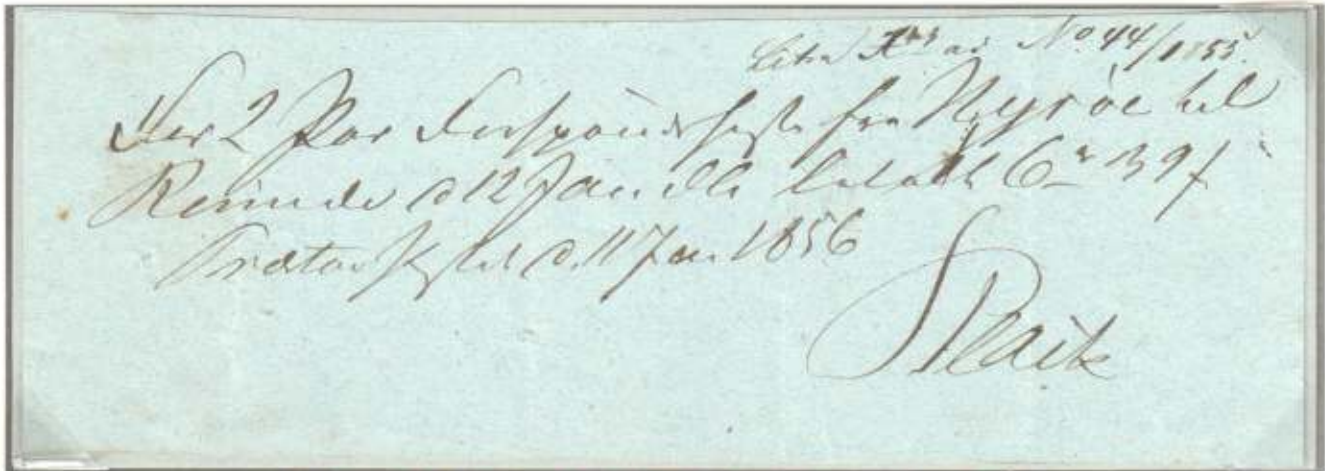
With additional albino imprint 10L which was for the cost of the card itself

ΚΕΡΚΥΡΑ - ΧΩΡΙΟΝ ΗΡΑΚΛΟΣ CORFOU - VILLAGE DE PELEKOS  
[έξοδος εκ του χωριού] [sortie du village]

"Έκδοση της 'Ελληνικής ταχυδρομικής υπηρεσίας'.  
«Edition du service des Postes Helléniques».



Multifarious Species contribute physically to our everyday Life in many Respects  
**Horses with their many Skills work hard for us**



*Receipt from the Danish Post office Præsto with text in translation*

*(only two such receipts are known – one in a collection in the U.S.A.)*

*“For 2 pairs of Team Horses from Nysø to Ronnedø the 12<sup>th</sup> Jan. this year paid 6rd 39sk. - Præsto Post office 11. Jan. 1856 – Black”*  
*(“Black” is the signature of the postmaster who was in office)*

Team Horses were often leased from local farmers so the relay stations did not have the extra expenses for having stables and stable boys

Colis Postaux de Paris  
 operated by the  
 postal service



Paris omnibus service  
 1878



Before the establishment of railways stagecoaches and omnibusses were used for centuries to transport people and goods over long distances



A stagecoach could be any four wheeled vehicle pulled by horses or mules, the primary requirement being that it was used as a public conveyance, running on an established route and schedule

*Plate proof with imprint of the printers und handwritten correction annotation*  
*The “decisive” part of the sheet formerly filed in the “Waterlow & Sons” archive*





Multifarious Species contribute physically to our everyday Life in many Respects  
Horses with their many Skills work hard for us



**RRRR** - Cover from Riga, Latvia, sent by stagecoach to Sagnitz at "Station Teilitz". (Dated August 25, 1870)  
"Station Teilitz" was a Relay Station where the stagecoach would get a new team of rested Horses for the next stag

Payment fee for using horses at the Zemstvo stations within Simbirsk district  
(Text on the reverse means "Stamp for payment of carriage on Zemstvo horses")

Misperforated



Misperforated



**RRRR** - Cancel on imprinted stamp is the station POTSHI.ST. dated May 23  
Next station is SKALBMERSH dated same day May 23 followed by station MIKHOV dated May 24  
Cancel on reverse dated May 26 (serial No. "1") but name of station is illegible



Multifarious Species contribute physically to our everyday Life in many Respects  
Horses with their many Skills work hard for us



Humans domesticated *Horses* and used them to perform a variety of duties

One type of horse-powered work was the hauling of heavy loads and other tasks that required pulling ability

Hauling barges on rivers was one of these works which was performed by a heavy, calm, patient, well-muscled animal



In Denmark the postal authorities had monopoly on transport of mail but on days when no official mail service was available, it was permitted to carry own mail by private means

Below: Letter carried on a barge pulled by men or horses on the Gudenå-river in Denmark dated May 11, 1855, with endorsement

*"Med kågmand Christian Enevoldsen sendes 30 Tdr. Vinterhvede I Deres og Kågmandens Sække" - which means "With kågmand Christian Enevoldsen I hereby send 30 bushels of winter wheat packed in yours and the kågmands sacks" ("Kågmand" was the old Danish occupational name for the boatman on such barges called "kågs")*

Very few letters sent on barges (kågs) are known in Denmark and only 2 letters are known with an endorsement confirming this

All the known letters are from the archives of the late merchant A. Falkenberg to whom this letter is addressed



RRRR

RRRR



Multifarious Species contribute physically to our everyday Life in many Respects  
Horses with their many Skills work hard for us



Japanese Army Military Postal Stationery Card - used during WWII - With censors mark

Since the early history of domestication of the horse, working animals were found to be exposed to many conditions that created breakage or excessive hoof wear



Therefore the need of domestic horses' hooves to have additional protection over and above any natural hardness was recognized

Fancy Cancel on letter from Horseshoe with date stamps on back as officially requested  
The only one known





Multifarious Species contribute physically to our everyday Life in many Respects  
 - and their Cousins – Donkeys and Mules – substitute them well



Postal Stationery – Deutsches Reichpost – (printed to private order) – 1901 – 5 Pfg

Depicting a group of donkeys on a mountain path

Imperforated at top



**Mules and Donkeys**

were useful in impassable areas like mountains where  
 Stagecoaches were used only when a road had been  
 constructed

Goods were carried on back of these  
 Pack Animals when only a path was accessible



Cover cancelled by mobile post office operating by Mules and/or Llamas in the  
 mountainous areas between Oruro and Uyuni in Central Bolivia

Text in cancel reads "Ambulancia entre Oruro y Uyuni"

(Letter dated 8th May, 1896)



(Another mobile post office was operated by train in the same area but a steam engine is depicted in that cancel)



Multifarious Species contribute physically to our everyday Life in many Respects  
- and their Cousins – Donkeys and Mules – substitute them well



Postal stationery postcard – Samos – 10L

A *Mule* is a cross breed between a female *Horse* and a male *Donkey* - It is unknown when the first *Mule* was bred but a *Mule* pulling a cart is found on an Egyptian comb painting dated 1400 AC

*Mules* became the “*poor Man’s Horse*” because *Horses* were often confiscated by the local rulers for military purposes  
Although the *Mule* is usually a patient and calm animal, it sometimes has a bad habit to kick

Very rare oval telegraph cancel from the town  
*Moulton* which is a habitational name  
originally from various places in England  
The name derives from Old English  
“mula-mule” + “tun-settlement” and these  
places were named after farms where  
*Mules* were bred



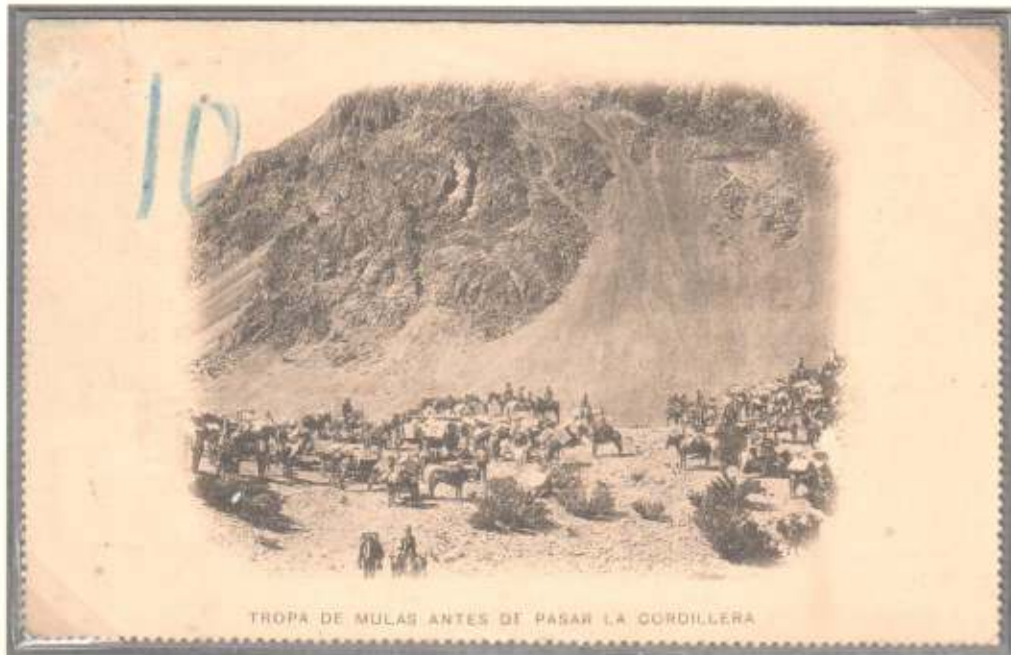
This oval handstamp was issued by  
the Post Office for cancelling stamps  
on telegraph forms and were  
sometimes also used on parcel stamps

Fancy Cancel – Kicking Mule – Arrival cancel Valparaiso on back





Multifarious Species contribute physically to our everyday Life in many Respects  
 - and their Cousins – Donkeys and Mules – substitute them well



Lettercard - Argentina - 4 Centavos

The *mule* is indispensable to carry loads in mountainous areas

The lettercard above depicts a group of *pack animals* gathered before starting the climb

Japanese Army Postal Stationery Lettercard - Sent from Central China Fujimura Force to Japan during WWII - (with censors mark)





1-3

Multifarious Species contribute physically to our everyday Life in many Respects  
The patient Oxen and Bullocks are sine qua non for many Tasks

Oxen are used as single animals or in pairs



(e)

Variety: Right stamp is 2 mm higher than normal issue

Only one stamp known



Proof

When ox drivers choose an animal in order to train it for an ox they choose one with horns

The horns keep the yoke on their heads when they back up



Left:  
Proof in un-issued colour

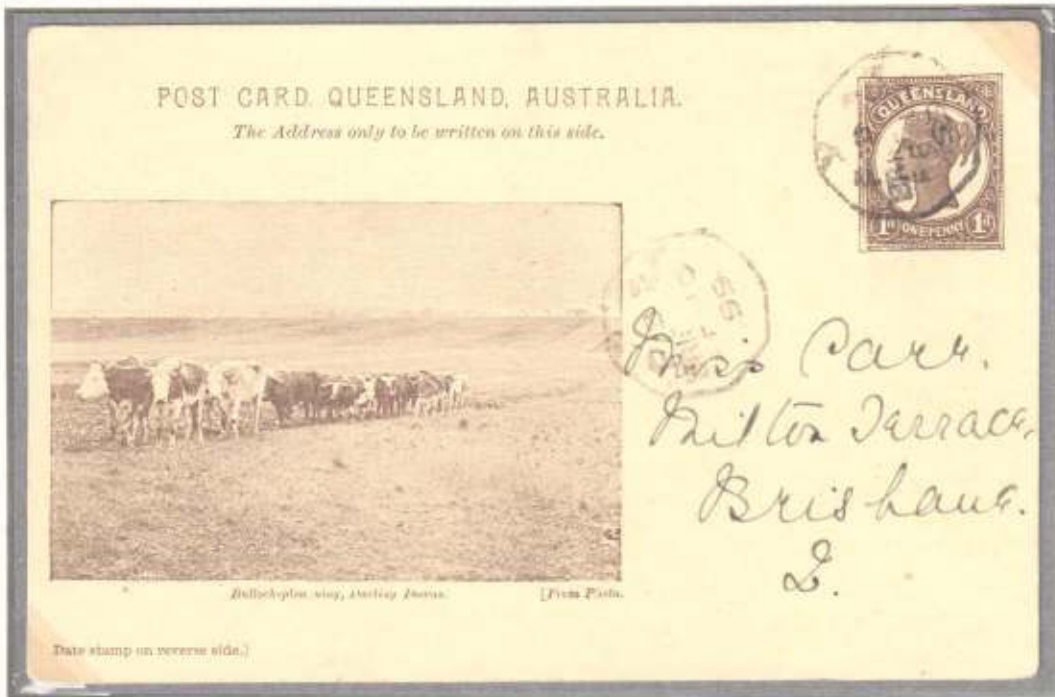
Below:  
Issued stamp





1-3

Multifarious Species contribute physically to our everyday Life in many Respects  
The patient Oxen and Bullocks are sine qua non for many Tasks



Although Oxen are usually used in pairs, it is sometimes necessary to use teams of several Oxen, which are pulling in pairs



Such teams were used for breaking new lands where the soil was hard and for pulling heavy loads





1-3

Multifarious Species contribute physically to our everyday Life in many Respects  
The patient Oxen and Bullocks are sine qua non for many Tasks



Postal Stationery Postal Card – Greece – 10L for international mail  
With additional albino imprint 10L which was the cost of the card itself

Proof with security puncture holes

Oxen  
can pull harder  
and longer than  
Horses



This makes them  
better for many  
purposes and they  
are invaluable for  
many farmers

Postal Stationery Postal Card - Zuid-Afrik. Republiek - 1 Penny  
(printed to private order)





Multifarious Species contribute physically to our everyday Life in many Respects  
The patient Oxen and Bullocks are sine qua non for many Tasks

In the early 1850's in India some of the ruling maharajas constructed railways but no locomotives were yet available

*Teams of Bullocks were therefore used to haul the coaches*

They made an average speed of 2½ miles per hour between the relays which were 8-10 miles apart

Locomotives were eventually introduced and with the growth and expansion of railway communication the use of *Bullock Trains* conveying mail, packages and parcels began to decline



Die proof from the archives of Thomas de la Rue

An agency named "The Government Bullock Train" was established under the management of the Post Office Department and the agency officers were under the charge of the Post Masters

But even as late as 1880, the Thacker's Bengal Directory announced that the *Bullock Train* Agency could be used for booking and conveyance of passengers and packages although the Government would not be responsible for any loss or damages



RRRR - Letter sent on "Benares Bullock Train"

**e** Receipt for shipment of 4 packages for despatch on Government Bullock Train with "Bullock Train" post office marking, which is the only known marking for this service





1-4

Multifarious Species contribute physically to our everyday Life in many Respects  
- and the Camel – The Desert Ship – is equally important elsewhere



Issued stamp



### Sepia Proof

only 2-4 copies produced in mandatory colour sepia for checking final engraving and requesting printing approval

Inverted center



Camel Caravans  
have for centuries been the only possible mean of communication between communities living in the deserts

Postal Stationery Postcard – Persia - 5 Chablis



Préparateur de thé de la Caravane.  
Toukatchi der Caravane.

Karawan en suite de Rezaï.  
Karawan tou Rezaï waterroep.



Multifarious Species contribute physically to our everyday Life in many Respects  
- and the Camel – The Desert Ship – is equally important elsewhere



Die proof from the archives of Thomas de la Rue



Camels have traditionally been used as pack animals for carrying goods through desert areas

And in some communities they are used also for leisure purposes such as racing



Inverted center bottom stamp



**Sepia Proof**

Only 2-4 copies produced in mandatory colour sepia for checking final engraving and requesting printing approval





Multifarious Species contribute physically to our everyday Life in many Respects  
 - and the Camel – The Desert Ship – is equally important elsewhere

In former times  
 Camel Caravans were  
 essential for the trade  
 of many products  
 between various parts of  
 the desert areas

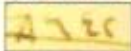


Partial chift of red colour

**RRRR**

Letter sent 1847  
 (Western Calendar)  
 from Kurfan, Sudan,  
 to Cairo (Masr El Mahrosa)

The letter is marked 8642



which is an Arabic mantra  
 or so-called magic figure  
 meaning Badoh Badoh and  
 is a wish that the letter arrives  
 safely and unread by  
 unauthorized persons



Travelling with camels  
 along the camel route  
 called Darb El Arbaian  
 from Kurfan to Cairo  
 took 40 days in ancient  
 times

The letter (left) was sent to  
 Mohamed Musa in Cairo  
 by a chief of slave traders  
 in Sudan named Sheikh  
 Mohamed Saleh Wadedy  
 and the contents of the  
 letter tells how to pay for  
 slaves sent with the  
 caravan

**RRRR**

Letter sent 1860  
 (Western Calendar)  
 from Saida to Egypt  
 and carried by Camels

First line is the name  
 of the addressee and  
 second line is the  
 name of the camel  
 driver (postman) who  
 was named Abu Elfadi



This letter is also  
 marked with the  
 mantra "8642" in  
 addition to another  
 mantra "4444"



Multifarious Species contribute physically to our everyday Life in many Respects  
The Elephant is the largest Animal living on Land – and we tamed it



*Manchester red Maltese cross cancel leaving Britannia free which was not compliant with regulations*



Elephants play an important role as part of ritual ceremonies in many countries



They are beautifully decorated and participate in parades



The Elephant is so important to states like Travancore that it is shown in the official Coat-of-Arms





Multifarious Species contribute physically to our everyday Life in many Respects  
 Other Species are indispensable for different Communities



Proof with "Specimen" and security puncture hole

The *LLama* was domesticated by the Incas several thousand of years ago and as of 2007 there were more than 7 millions of *Llamas* in South America



Error: Dark brown colour at bottom of lower stamps



Letter sent by War Secretary José María de Achá (later Bolivian President) on the 8<sup>th</sup> November, 1898

Extremely rare Postmark used by the Bolivian Defence Department - only known copy -

Ears missing on LLama on upper stamp



Still today they are very important for the inhabitants of the mountain areas who use them for beasts of burden on the mountain tracks

Their meat is delicious and the wool is used by the locals for clothes

Error: Inverted printing



Error: Missing "L"



Issued stamp





Multifarious Species contribute physically to our everyday Life in many Respects  
 Other Species are indispensable for different Communities



Local city mail

The *Reindeer* is indispensable for the inhabitants of the northern regions of Scandinavia and Asia particularly during the severe winters



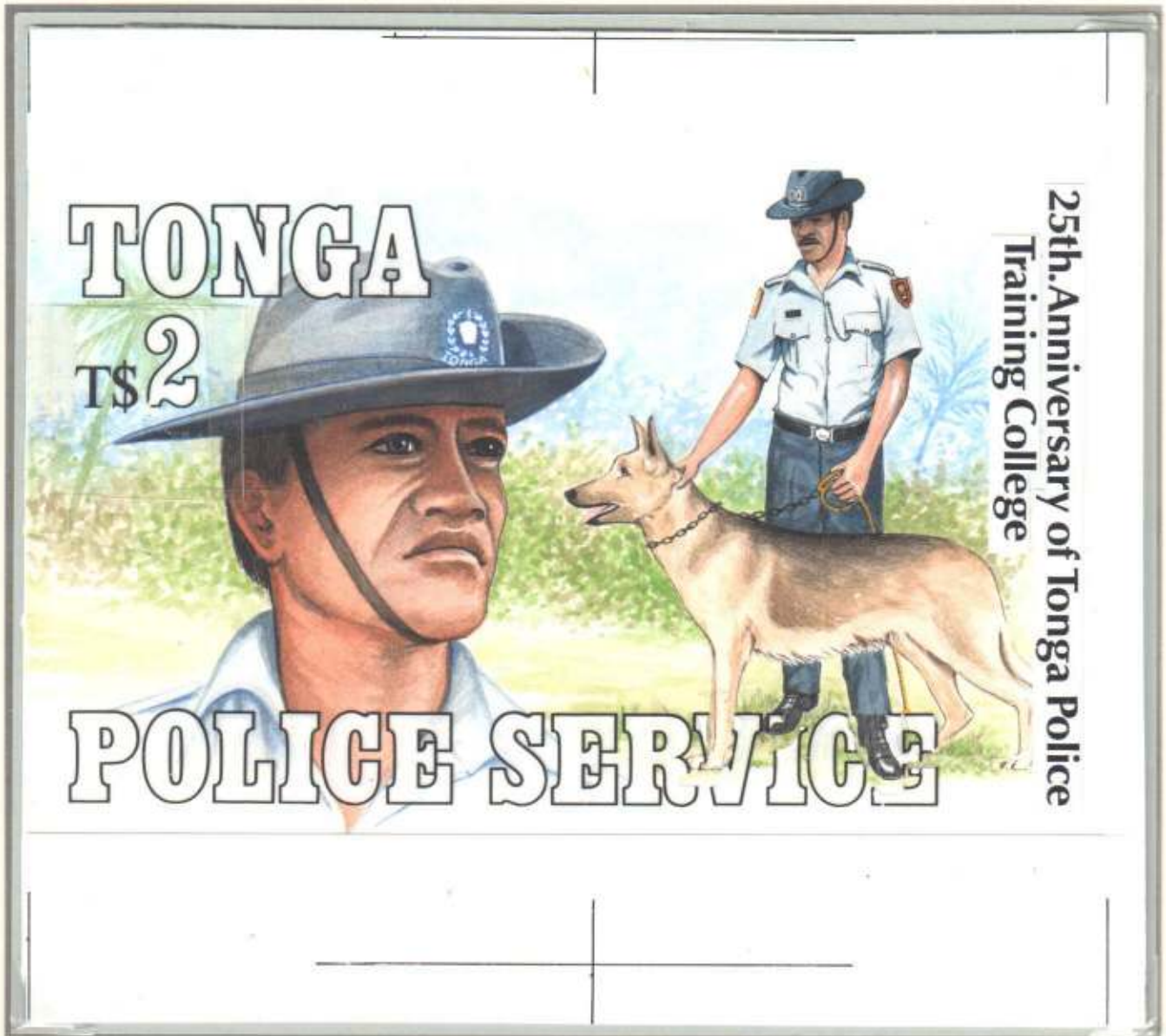
Fried meat from Reindeer

and it is very important to the Finnish armed forces patrolling the harsh rural areas





Multifarious Species contribute physically to our everyday Life in many Respects  
 - and the intelligent Dogs are at our Side



Artwork – designed by Derek Miller  
 from Tonga printers archival  
 printed by Walsall Security Printers



There are two pieces of the artwork  
 First the colour artwork itself and  
 second is the transparent overlay  
 showing the artwork for the text  
 and value

Variety: Colour shift



Error: Missing colour



Issued stamp









Husbandry has enabled Mankind to reach present Stage of Civilization  
Some Species have helped us link the World together through Mail Services

*Pony Express  
stamp cancelled  
with the very rare  
Wells Fargo  
cancel depicting a  
Pony in the centre*



### Horses

were used for *Mail Dispatch* in many parts of the world  
In the U.S.A. the  
*Wells Fargo Pony Express*  
service was established in 1852 and became the most important  
mail service for many years taking over where the  
railways did not operate

Six hundred *Broncos* especially chosen for fleetness, toughness and endurance were purchased and seventy-five men, none of them weighing over one hundred and ten pounds were engaged as riders

Each rider would pick up the mail and ride sixty miles at top speed to the point where the next rider took over  
- six hours were given each rider for his stage and during that time he rode six *Ponies*



Although the *Pony Express* and the *Stagecoaches* were operating at fixed schedules from one relay station to the other it was possible to stop them on the way and deliver mail to be carried on

In the U.S.A. such mail was marked by the rider or stagecoach driver with the word "*Way*" and the amount of postage which was charged. On the letter above a fee of *10 Cents* was charged

*RRRR - Cover with marking "Befordres med ridende bud" meaning "To be carried by riding messenger"  
Post free Official Mail - Wax seal on back - Dated 1855 - Denmark*





Husbandry has enabled Mankind to reach present Stage of Civilization  
Some Species have helped us link the World together through Mail Services



(e)

**RRRRRR** - Letter from the Philippines dated 18<sup>th</sup> November, 1899  
S.M. - Military Mail Service - with black official seal  
With marking "Urgentisimo - A caballo sin perder momento" meaning  
"On Horseback Express"

Proof of  
Washington City 1c  
Despatch Stamp



Horseback riding was a primary method of delivering mail and messages for many years in different countries around the world and Local City Mail was carried by horseback riders in most larger cities

Braunschweig City Mail



"Express Mail" letter sent in 1837 from Mobile to New York primarily by Stagecoach. - Exceptions were the Philadelphia to Wilmington leg, which was carried by train, and the Greenville to Alabama leg which was carried on Horseback





Husbandry has enabled Mankind to reach present Stage of Civilization  
Some Species have helped us link the World together through Mail Services



First Argentine stamp with Stagecoach Cancel

AGENCIA  
DEL URUGUAY  
MARZO-31 DE 1861



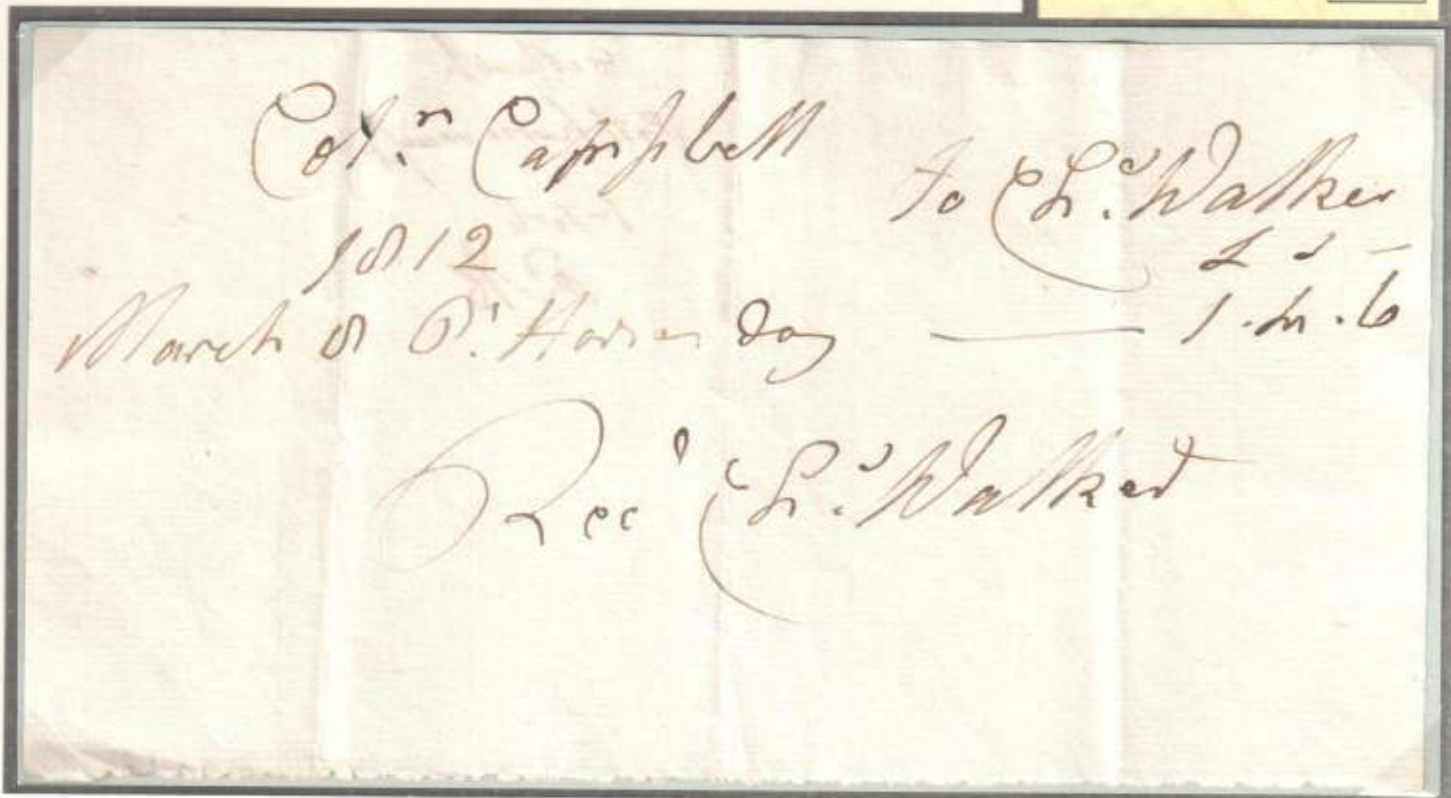
Above: Letter from Spain dated 7th May, 1818 and forwarded by Diligencia (Stagecoach)



Above: Letter sent by "Estafette" from London to Lyon on the 7th July, 1833

Below: Post Horse Receipt for the payment of £1-4-6 to L. Walker for delivering mail from Colin Campbell of Arshatten Priory in Argyll to his business connections in London by horse

Dated  
March  
1812  
(The  
account  
was  
settled on  
a monthly  
basis)





Husbandry has enabled Mankind to reach present Stage of Civilization  
Some Species have helped us link the World together through Mail Services



Letter sent 30th January, 1829 from Anvers, Belgium to St. Nicolaes by Stagecoach (par Diligentie) with text reading in translation "with a package fixed on containing 43 Florins 50 Cents of Netherlands"

Black colour missing on right stamp



After construction of railways the postal services were still depending on  
*Horseback Riders or Stagecoach Companies* in most countries in order to bring mail from the railway stations to rural areas and these services continued for many years

Misperforated pair

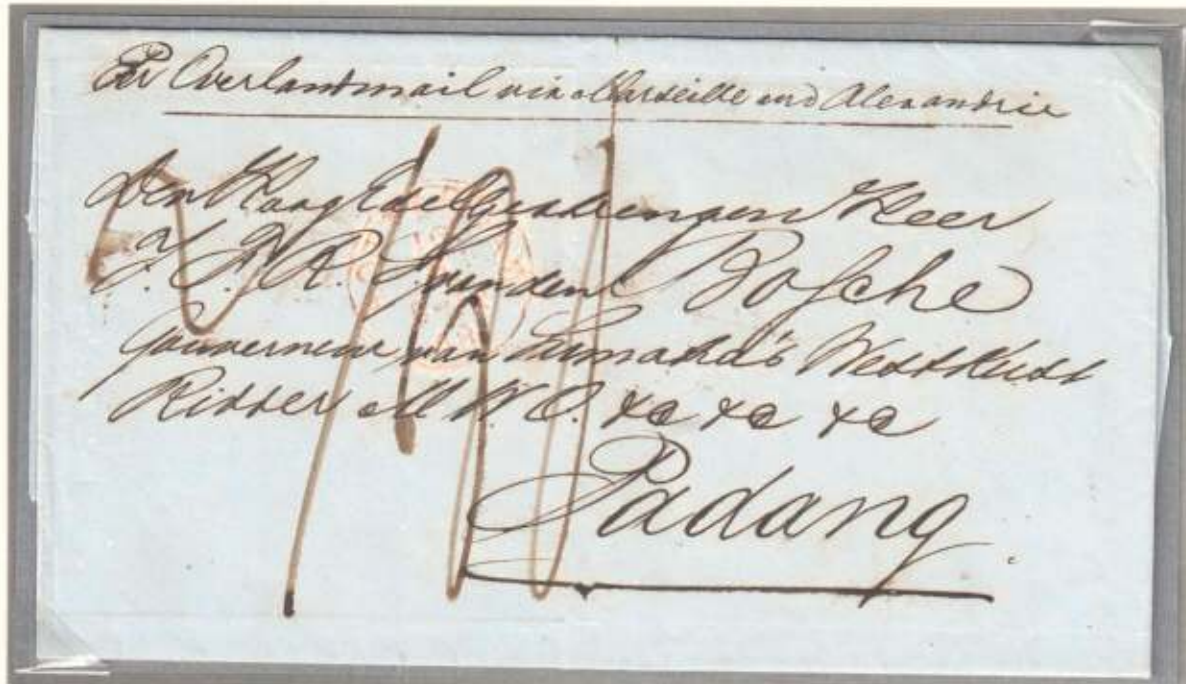


Cover dated 5th August, 1851, sent by "Overland Express Co." which was the leading Stagecoach company in California. The company was taken over by Wells Fargo in 1852





Husbandry has enabled Mankind to reach present Stage of Civilization  
Some Species have helped us link the World together through Mail Services



Letter sent 1863 from Rotterdam via Alexandria to Padang

Egypt was for many years an important part of the "Overland Route" between the Far East and Europe

This route was established in 1842 and operated by *Camel Caravans*. Mail, passengers, and baggage were sailed to Suez where it was disembarked and carried across the desert to Alexandria via Cairo and vice versa



The P. & O. Company at one time owned 3,000 Camels, which were employed on this service which operated until 1854 when a railway was constructed

*Cover sent from Batavia, Dutch India, to Bordeaux, France - Dated 12<sup>th</sup> March, 1855  
The letter was sent via Suez, Egypt, and as the Suez Channel was not opened at that time (opened 1869)  
it was carried by Camel Post from Suez to Alexandria  
(backstamped British Post Office, Alexandria, 21<sup>st</sup> April, 1855)*





Husbandry has enabled Mankind to reach present Stage of Civilization  
Some Species helped us link the World together through Mail Services



Letter sent by Camel Post from Phalodi to Jaisalmer via Pokaran in North West India, bordering Pakistan  
Letter is postmarked 1901

Mail to and from Jaisalmer was catered by Camel Sowars (riders) appointed by the state Jaisalmer is located in the Thar Desert

Camel Post

is one of the most ancient methods of mail transport and often the only one available in desert areas



Gold was discovered near Coolgardie in 1892 and the area grew to well over 20,000 people in only a few years

"Coolgardie Cycle Express Co." established by James A. Healy was the most important mail service in the area, and operated with camels until 1896 when the Post Office took over



RRRRR - Postal stationery postcard carried by CAMELS via Upington and sent to Düsseldorf - dated 12.4.1901

The mail route from Rietfontein following the old trade route through the Kalahari desert was referred to as "MIER", which was a small village about 30 km from Rietfontein without any postal facilities itself

The service was commenced in 1895 on Horseback and part of the way by a runner

In 1898 an Ox-cart was used but due to rough terrain the post office decided to make use of Camels, and this service commenced in June, 1899

With some interruptions between 1906 and 1909 the Camels were used until 31<sup>st</sup> March 1914





Husbandry has enabled Mankind to reach present Stage of Civilization  
 Some Species have helped us link the World together through Mail Services



Postmarks on back of cover

Cover sent on 22 February, 1877 from Esquimaux Point (Quebec North Shore and carried by **Dog Team**



McGreeley's Express for mail carried by dog sledge from Dyea to Skagway during wintertime

All mail to and from Quebec North Shore was carried by **Dog Team** during winter time in 1877

First stop was Bersimis (March 20<sup>th</sup>) and then to Tadousac (**by Dog Team**)  
 From Tadousac it was sent by regular land mail to Quebec (May 3rd) where it crossed the St.Lawrence River and then further on to Levis and destination St.Etienne de Beaumont  
 (The cover was 2½ month in transit)

Local mail VADSØ

Winters in the northernmost parts of Norway are very harsh with heavy snowfall and during the wintertime the mail was previously carried by **Reindeer** from Alten to Vardo as no other transportation was possible

Below: Cover sent by **Reindeer Mail** during February, 1858 from TROMSØ (Northern Norway) via ALTEN, KARASJOK, POLMAK, NYBORG and SVARTNES to VARDØ

This route was based on a royal resolution of July 16<sup>th</sup>, 1812





Husbandry has enabled Mankind to reach present Stage of Civilization  
 Camels made the Silk Road Trade in the Middle Ages possible



The stamp to the left depicts a painting of *Silk Weaving* during the *Han Dynasty (206BC-220AD)* at which time the first *Silk Road* started

The *Silk Road* had its first real boom in around year 200 a.C. when the Roman Emperors received gifts made from *Silk* from Chinese rulers



The stamp above depicts a painting on *Silk* unearthed from the Han Dynasty Comb No. 1 at Mawangdui

During the 14<sup>th</sup> century a production of *Silk* began in the Western countries but other merchandise were still traded along the *Silk Road*



*Marco Polo* travelled along the *Silk Road* on his voyage of discovery to the Far East (1271-1295)

Error: Missing colour

Marco Polo



The *Silk Road* is recognized as one of the most important trade links between East and West in ancient times

It may have been used much earlier than officially recognized as silk has been found in the hair of an Egyptian mummy of the 21st dynasty, c.1070 BC

Japan Military Mail Postal Stationery Postal Card - used during WWII - with censors mark





Husbandry has enabled Mankind to reach present Stage of Civilization  
- while other Species have been decisive for the Result of Many Military Battles



A mural from the Dunhuang Caves depicting fighting Cavalry

Horses have taken part in most of Mans wars where history has been made and they have been used for millennia – probably since the time of domestication of the horse

Horses were specially trained for a variety of military uses including Cavalry



Offset – left stamp



During the reign of *Chingis Khan* he conquered almost all of Asia (not South East) and parts of Europe

This was made possible only because the army used *Horses* and was very mobile  
The army was split up into units of 10 warriors, these were again united in groups of 100  
- again 1000 and finally a "tumen" of 10.000 riders

Each warrior brought 3-4 extra *Horses* so he could always have a rested *Horse* at his disposal  
(*Chingis Khan* was married to *Borte* from the tartar tribe)

Letter to London „Per Tartar“ franked with Laureates 2d ultramarine & 3d tied by "2" cancels of "Parramatta" Sydney transit & London arrival on reverse





Husbandry has enabled Mankind to reach present Stage of Civilization

- while other Species have been decisive for the Result of many Military Battles



Fancy cancel from "Horseheads", N.Y. - Date stamps on back

Misperforated



General Sullivan

There is a special story behind the name of this post-office "Horseheads"

In 1779 General Sullivan lead the Sullivan Expedition, a massive campaign against the Iroquois in Western New York

He pushed his troops so hard that some of their horses became unusable and were killed

The native Iroquois collected the skulls and arranged them in a line along the trail

From that time forward, that spot was referred to as the "valley of the horses' heads"

Iroquois



"Soldier's Due" cover sent by a confederate soldier serving in General Lee's 2<sup>nd</sup> VA Cavalry during the American Civil War

Dated 10<sup>th</sup> January, 1863

The letter was sent "collect" and carried to Richmond by a soldier



In Richmond is was taken over by the official postal service and delivered to the addressee who was then charged "10 Cents"



S. Ch. <sup>aux</sup> Cheval  
 Picence 10. Janvier  
 — 1809 —



Previously the  
*Cavalry*  
 was superior to the  
 infantry because they  
 were mounted and  
 could move much  
 faster

Today the *Cavalry*  
 is seldom used in  
 direct combats as  
 horses are easy  
 targets for modern  
 weapons

Left:

Military letter sent on  
 horseback from Napoleons  
 "8eme Chasseur à Cheval"  
 Milan  
 on 10<sup>th</sup> January, 1809

The Kingdom of Italy  
 was a French puppet  
 state founded in Milan,  
 Northern Italy,  
 by Napoleon I

Right:

Registered cover dated  
 March 25<sup>th</sup>, 1902,  
 from a soldier fighting in the  
 Second Boer War,  
 South Africa (1899-1902) -  
 and endorsed  
 "18<sup>th</sup> Hussars"

Cancelled by  
 "Army Post Office"  
 in Klerksdorp where some  
 of the fiercest battles  
 were fought

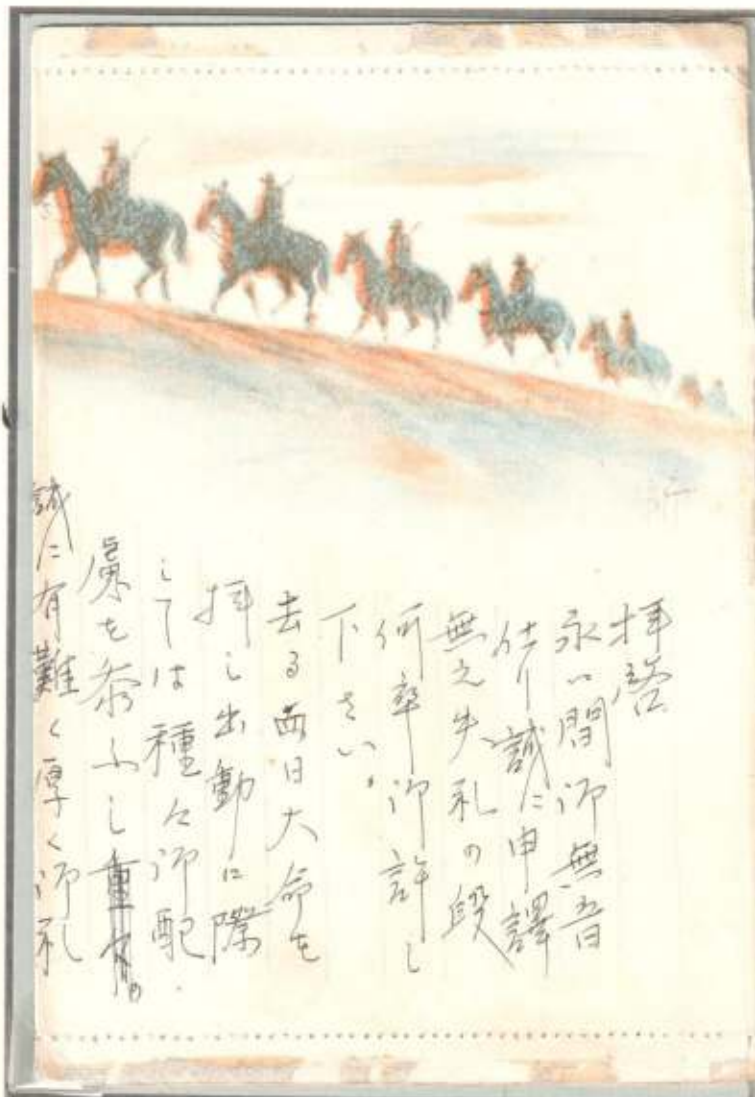




Husbandry has enabled Mankind to reach present Stage of Civilization  
 - while other Species have been decisive for the Result of many Military Battles



Postal Stationery Postcard - Provided by the Japanese Armed Forces's postal service to its soldiers during WWII in China - with censors stamp on back)



Left:  
 Postal Stationery Lettercard  
 Provided by the Japanese Armed Forces's postal service to their Cavalry in North China during the Japanese Occupation in 1942  
 With censors stamp

Below:  
 Private stamp printed for use during the British Postal Strike in 1971  
 The Government announced that the Post Office's monopoly on carrying letters would be suspended for the duration of the strike and several hundred private posts were set up - with their own stamps



Misperforated



**Husbandry has enabled Mankind to reach present Stage of Civilization  
- while other Species have been decisive for the Result of many Military Battles**



*Postal Stationery Card – Greece – 5 L for domestic mail  
With additional albino imprint 10L which was the cost of the card itself  
Depicting an old Greek battle scene – “The Triumph of Achilles” - on a mural on Corfu*



*Horses and Mules have been used as  
Draught Animals and Beasts of Burden  
for thousands of years*

*And during the world wars millions of  
War Animals  
were used and it is estimated that 8 million  
died on all sides fighting during WWI alone*



*1859.  
Battaglia di  
S. Martino.*

*Postal  
Stationery  
Postcard  
Italy  
5 Centesimi*



Husbandry has enabled Mankind to reach present Stage of Civilization  
 - while other Species have been decisive for the Result of many Military Battles

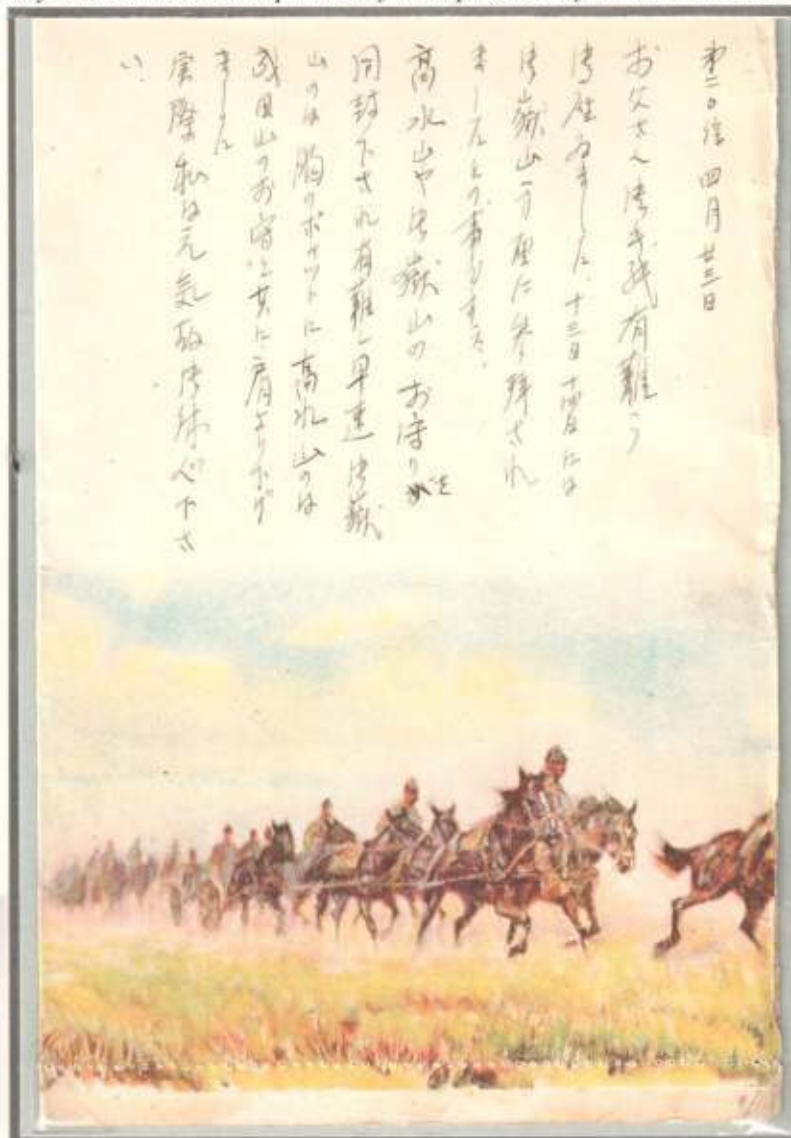


Postal Stationery Lettercard issued and provided by the Japanese Army's Postal Services during WWII



Horses used in wartime as Draught Animals are from much heavier breeds than those used for the Cavalry

A heavy breed suitable as draught animal



Horses can carry up to 25% of its body weight but can pull much more than they can carry





Husbandry has enabled Mankind to reach present Stage of Civilization  
 - while other Species have been decisive for the Result of many Military Battles



Cover dated 5th February, 1915, and sent by a cavalryman in the French "1<sup>st</sup> Division de Cavalerie"

The Horses used for the Cavalry were light-weight breeds as they had to move fast



The "3<sup>rd</sup> Light Horse" regiment (Cover below) was an Australian regiment first stationed in Italy, then moved to Sudan and finally to Egypt during WWI



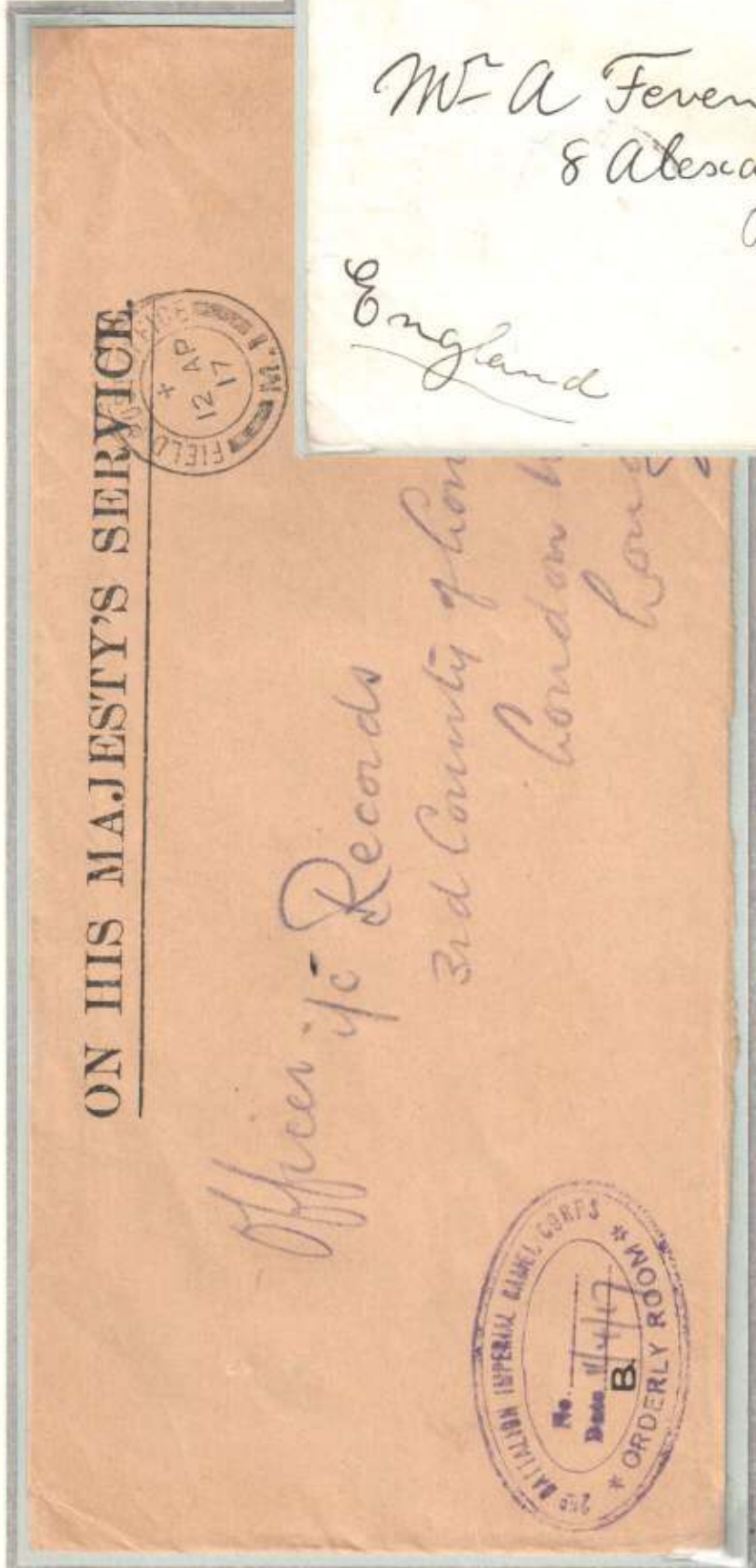


Husbandry has enabled Mankind to reach present Stage of Civilization  
- while other Species have been decisive for the Result of many Military Battles

Below: Official cover  
dated April 12, 1917 -  
Sent by  
"2nd Battalion Imperial  
Camel Corps"



Above: Cover stamped 25th May, 1904 at "Base Office Berbera" and sent from a soldier enrolled in the "British Somaliland Camel Corps" which was stationed in British Somalia during the campaigns 1901-04



The Camels were mostly used in combat because of their ability to scare off Horses in close ranges



The British Empire used Camel Corps in North Africa during WWI

The 2nd Battalion Imperial Camel Corps was established in 1916 and fought against the Senussi Confederation of tribes in the Western deserts of Egypt

Left stamp punctured AS for Army Service  
Right stamp overprinted Army Service





Husbandry has enabled Mankind to reach present Stage of Civilization  
 - while other Species have been decisive for the Result of many Military Battles

**Homing Pigeons**  
 have often been used during war times and **Birds-of-Prey** like trained **Falcons** were used by the other side to catch them



RRRR  
 Folded letter with ship endorsement and with postmark Talangatta 24<sup>th</sup> Oct. 1842  
 - taken privately to Melbourne and endorsed "Per Falcon to Sydney, thence per first ship"

Homing Pigeons were used already in the ancient Egypt



In pre-UPU times the sender could indicate the route which an international letter had to travel  
 Ship names and departure dates were published in the post offices and senders could direct their mail at their choice depending on security, speed and different tariff systems

The stamp to the right depicts an old Pigeon Loft



Write address in large BLOCK letters wholly within the panel

TO: MRS. S. L. OGDEN, 224 POPLAR PLAINS ROAD, TORONTO, CANADA.

376177

PAID

Write the message very plainly below this line.

The proprietors and Editor of "The Aero Field" send their greetings for Christmas and the New Year by the 72 years old method that has been revived in the present emergency.

These illustrations of the 1870 service transmitted by the new method are an interesting souvenir of both events.

TOURNAI, Belgium, 16th. November 1942.

**OPEN LETTERS for PARIS.**  
 Transmission of by Carrier Pigeons.

THE Director-General of the French Post Office has informed the Government that a special Directorate, for means of Carrier Pigeons, of correspondence addressed to Paris has been established at Tours, and this work Directorate may be made use of the local letters, or cards, addressed to the Special Directorate, and forwarded by post to Tours.

Persons desiring to profit themselves of the means of transmission must observe the following regulations:-

Every letter must be sealed apart, they are enclosed one name or address, and address only one, and in such to recipient.

The letter must consist of more than twenty words including the address and the signature of the sender, but the name of the addressee, the date of the receipt, and the name of the carrier-although contained of more than one word- will not be enclosed in the seal only.

The paper used to seal, the number of the boxes of the addressee must be given in words.

Sealed letters placed together for letters or subscriptions will be enclosed according to the number of words relating to the recipient name.

The letters must be written entirely in French, in clear intelligible language. They must never contain any private letters, and no political allusions or references to the War will be permitted.

The charge for these letters is free when they are sent and they should reach in parcels in addition to the postage of stamps for a single recipient letter addressed to France.

The Director-General of the French Post Office, in carrying this arrangement, has stated that he will ensure the safe delivery of the correspondence, and will not be in any way responsible for it.

By Command of the Postmaster-General.

BRITISH P. O. NOTICE OF 1870.

MAKE SURE THAT THE ADDRESS IS WRITTEN IN LARGE BLOCK LETTERS IN THE PANEL ABOVE

When Paris was besieged by the Prussian Forces during part of 1870 and 1871, Homing Pigeons were used to bring mail in and out of Paris during the four months from September 25<sup>th</sup>, 1870 to January 28<sup>th</sup>, 1871

The Homing Pigeons were sent out from Paris on balloons to Tours from where they flew back to Paris carrying the messages which had been microfilmed on celluloid

The "Films" below has coded micro-filmed messages for various recipients in Paris and was sent by Pigeon Post from Tours to Paris on the 24<sup>th</sup> October, 1870



This V-mail - dated November 16<sup>th</sup>, 1942 - was the first with this particular message to be sent







Many Species of Mammals are vital for our Supply of Food and Commodities  
 The Cow is probably the most important domestic Animal

Cows (Cattle) are the most common type of large domesticated ungulates

They are raised as livestock for meat, as dairy animals for milk and other dairy products -

- and as draft animals (pulling carts, plows and the like)



Security puncture holes

Waterlow and Sons Ltd. Specimen



The illustration below is dated 1898 and at that time there was no serious pollution from cities  
 Today there is a high concentration of pollution in the air and therefore grazing near the cities is not advisable

Postal Stationery Postal Card - Mexico - 3 C





Many Species of Mammals are vital for our Supply of Food and Commodities  
**The Cow is probably the most important domestic Animal**

The domestic *Cow* derives from the *Aurochs* which has been extinct since the last one was shot in Poland in 1627



The *Cow* was domesticated around 8000 years ago and today there are around 1.5 billion *Cows* of many different breeds in the world



*Misperforated block*

Some of the breeds are heavy fleshy animals which are bred for the production of meat and some very important side products such as leather

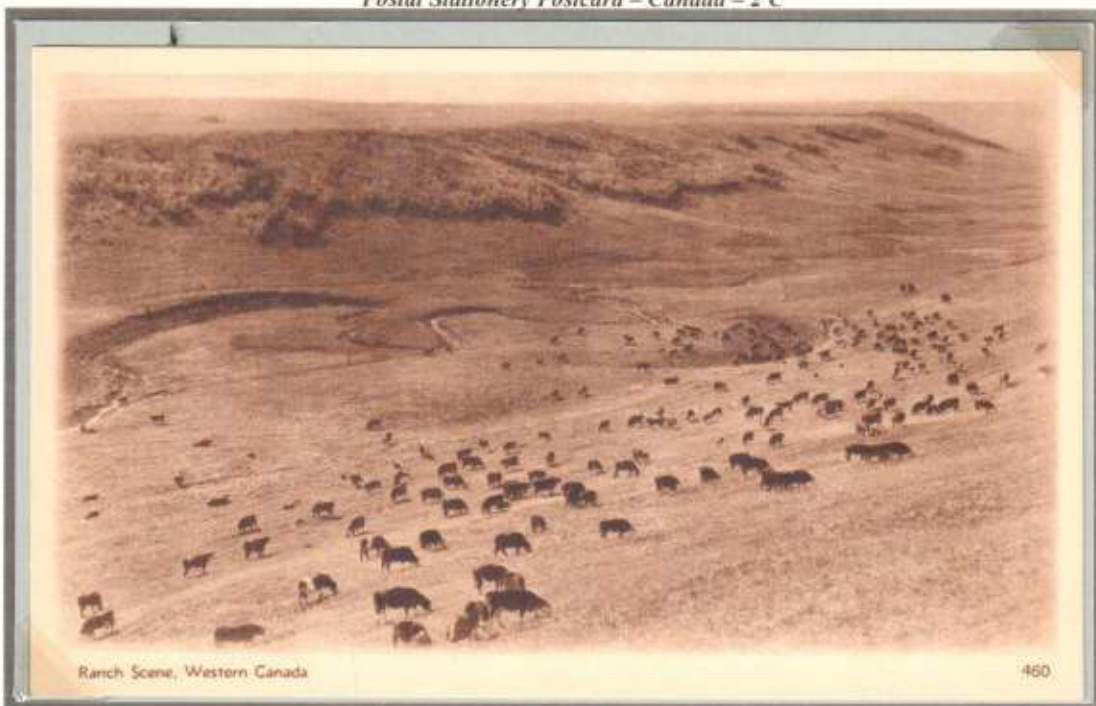


*Imperforated between pair*

*Waterlow & Son Specimen*



*Postal Stationery Postcard – Canada – 2 C*



Ranch Scene, Western Canada



Many Species of Mammals are vital for our Supply of Food and Commodities  
 The Cow is probably the most important domestic Animal



Some breeds are slimmer and used as *Dairy Cows* which are specialized and have been bred to produce large volumes of milk



Certain breeds produce more milk than others, however, different breeds produce within a range of around 4,000 to over 10,000 kg of milk per annum



*Dairy cow herds* range in size from small farms of fewer than five cows to large conglomerates of 25,000 cows or more



The natural lifespan of a *dairy cow* is approximately 25 years, however *dairy cows* are rarely kept longer than five years

*Dairy Cattle* are often kept in stables or bounded areas

However, in most cases, the cattle will graze in open fields, which allows them more varied food as various other plants and herbs will be included in their food





3-1

Many Species of Mammals are vital for our Supply of Food and Commodities  
The Cow is probably the most important domestic Animal



Sepia proof

Only maximum 4 pieces are made from the unhardened die as a final check before printing



Herdsman were responsible for the safety of the cattle which sometimes were herded over large distances in order to find the best grassing



Letter sent 1803 by William Penn who correctly signed the letter in lower left corner to verify his free frank privilege

Penn is an old occupational name for an impounder of Stray Animals  
This is from the Old English pre 7<sup>th</sup> Century word "penn" meaning a "cattle enclosure"





Many Species of Mammals are vital for our Supply of Food and Commodities  
The Cow is probably the most important domestic Animal



Postal stationery lettercard – Argentina - 4 Centavos

Letter dated August 6,  
1836 and mailed from  
the post office Bull  
Skin, Ohio

The postage paid  
was \$ 18¢

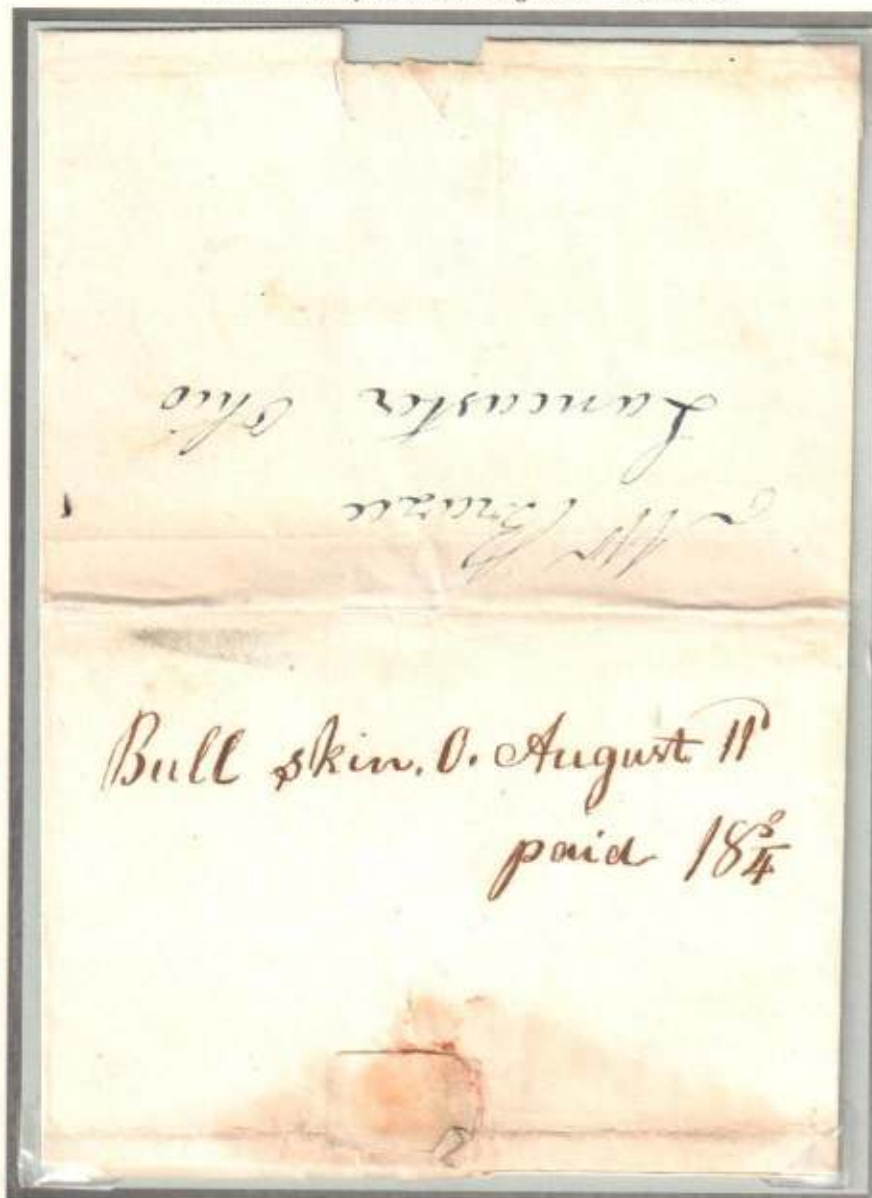
In 1836 Ohio used as  
well Spanish reales  
as dollars

The postal rates were  
fixed in Spanish  
reales and the rate  
for a letter sent 150  
to 400 miles was  
1½ Reales

Exchange rate was  
8 reales to one dollar  
and postage could be  
paid in \$ as well, so  
1½ real was equal to  
the rate of 18¢ cents

This post office was in  
operation for six years  
only from 1836-1842  
in Gallia County

So this letter is  
from the first  
year of operation  
and is extremely  
rare as very few  
letters have  
survived



Not much is known  
about the office  
Bull Skin,  
perhaps not even  
precisely where it  
was located but it was  
in an area with  
concentrated cattle  
breeding

The Official Register  
of 1843  
listing postmaster  
compensation and  
net proceeds, which  
is a measure of how  
much business a post  
office did, shows  
that the office did  
only about \$15 worth  
of total business  
between 1841 and  
closing in 1842

By contrast, a typical  
county seat or other  
fairly large towns did  
at least \$1000 worth  
of business in this  
period



Many Species of Mammals are vital for our Supply of Food and Commodities  
The Cow is probably the most important domestic Animal



The Cow is a major supplier of meat

Advertisement on back of similar stamp





Many Species of Mammals are vital for our Supply of Food or Commodities  
 - but the Pig must come in second



Postal Stationery Postal Card – Shanghai Municipality Local Post



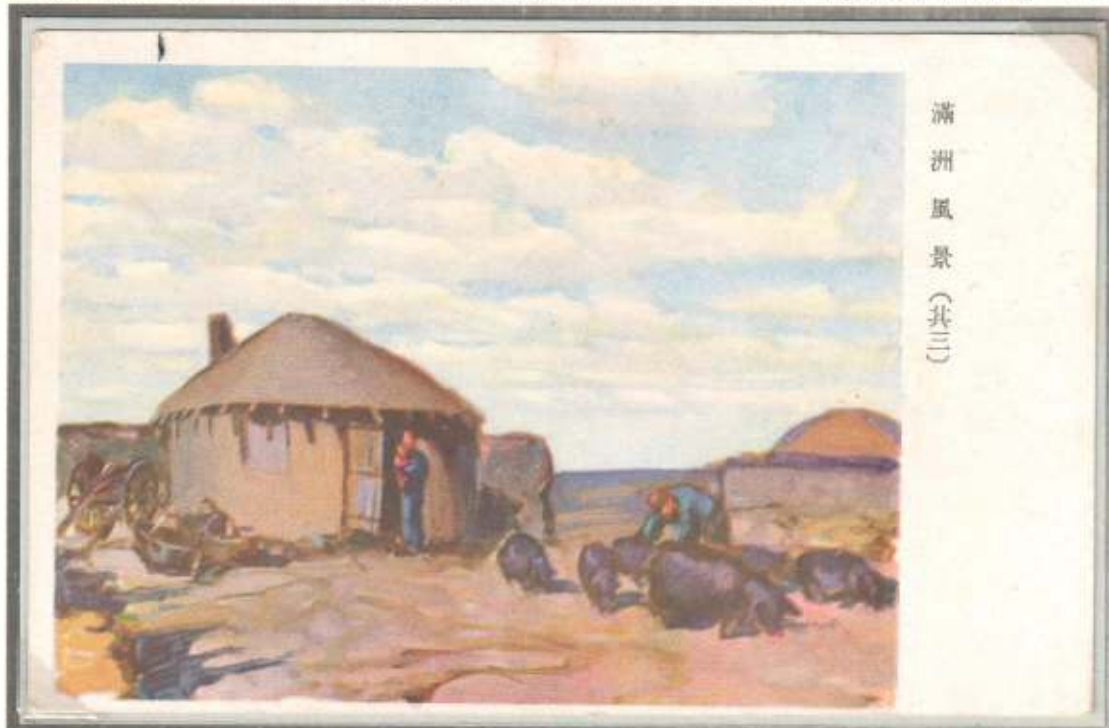
*The Pig*

is omnivorous and has therefore been an easy domestic animal for many households

It originally derives from central Asia, where it was domesticated perhaps as early as 11,000 BC



Postal Stationery - Printed and provided by the Japanese Military Services to troops in China during WWII





Many Species of Mammals are vital for our Supply of Food and Commodities  
- but the Pig must come in second



In addition to being one of the main food sources *the pig* also provides *leather* which is used for many purposes

More than 50 billions *pigs* are slaughtered globally each year





Many Species of Mammals are vital for our Supply of Food or Commodities  
Sheep, Goats and other Species serve us – often in rural Areas



RRRR

Letter sent June 11, 1861, from Victoria, Australia, to Hobart Town, Tasmania

At that time both were separate colonies so the international postal rules applied  
In pre-UPU times the sender could indicate the route which an international letter had to travel

Shepherding is one of the oldest professions, beginning some 6,000 years ago in Asia Minor

**Sepia Proof**

Only maximum 4 pcs were made from the unhardened die as a final check before printing





Many Species of Mammals are vital for our Supply of Food and Commodities  
 Sheep, Goats and other Species serve us – often in rural Areas

**RRRR**

Very rare cover from the small city CARNEIRO in Kansas dated July 5, 1889

Carneiro never had more than around 60 citizens and the post office existed 1882-1935



Due to the very small population only very few covers from Carneiro have survived

12,000 acres of land were purchased 1880 in Kansas by a person, E.W. Wellington

He established one of the largest ranches in Kansas and specialized in production of Sheep and Wool

The post office in a small nearby village was named Carneiro (Portuguese word for Sheep)



Left: misperforated



Right: Offset on rubber side



[Date stamp on reverse side.]

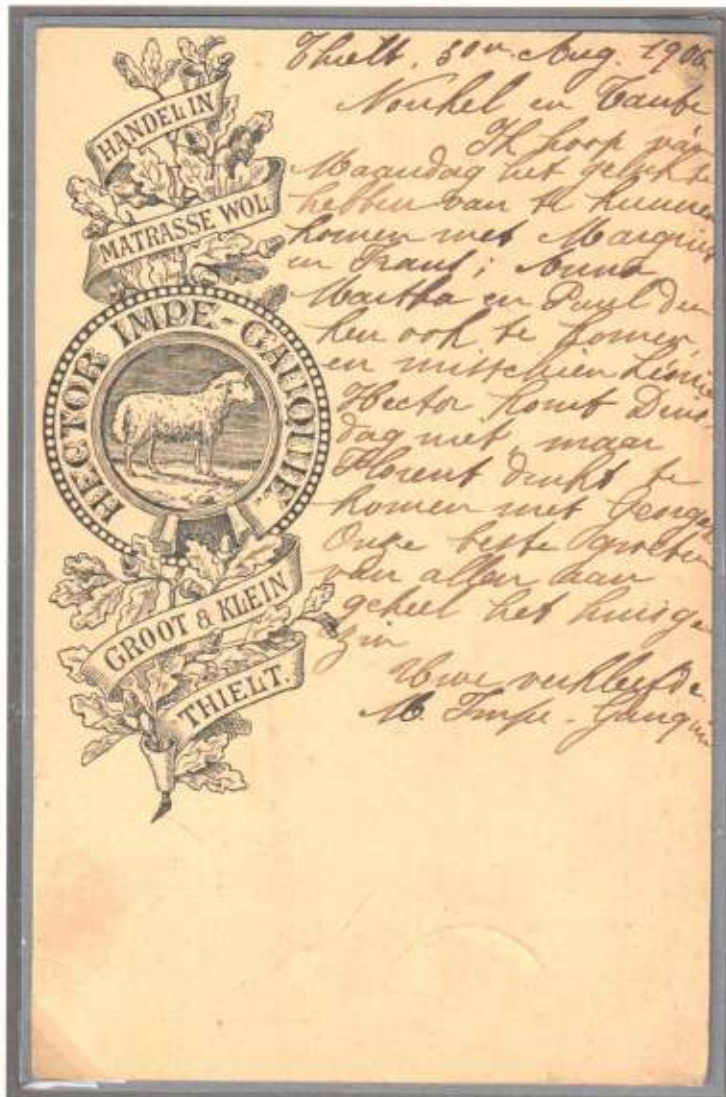


Many Species of Mammals are vital for our Supply of Food or Commodities  
 Sheep, Goats and other Species serve us – often in rural Areas



Zemstvo Stavropol

Sheep and Goats are very easily satisfied and can live on almost all herbs and even small bushes



Postal Stationery – Belgium – stamped to order



Pioneers of Italian Wool Industry

They are therefore valuable domestic animals in many rural areas where they are often looked after by shepherds or trained sheepdogs



Sheep under a Bottle-tree, Western Queensland. [From Photo. Date stamp on reverse side.]



Many Species of Mammals are vital for our Supply of Food and Commodities  
 Sheep, Goats and other Species serve us – often in rural Areas



*Washdyke* (right) was named so by the brothers George and Robert Heaton Rhodes, because they dammed the stream here to form a pool for washing their sheep before shearing



Typically each adult *Sheep* is *shorn* once each year and the *Sheep* will be washed before being *shorn*  
 Basins called *Washdykes* have been build for this purpose  
 A special soap is added to the water in the washing basins



The city name "*Shepton*" derives from the Old English pre 7<sup>th</sup> Century "*Sceap*" (*sheep*) with "*ton*" (= *tun*)" (an enclosure), and Anglo Saxon "*Scepwaeistune*" meaning *Sheep-wash*

Letter sent 1850 to Madeira from "*Shepton Mallet*" – with mark "240 Reis"





Many Species of Mammals are vital for our Supply of Food and Commodities  
 Sheep, Goats and other Species serve us – often in rural Areas



Booklet containing 32 stamps – 8x1½d, 12x1d and 12x½d – (left: Photo copy of front)

Wool is a freely traded international commodity, subject to global supply and demand



While Wool represents only 3% of world fiber production, it is important to many country's economies and way of life



New Zealand and Argentina are two of the major producers with huge exports while a small nation like Tristan da Cunha is producing for domestic use only

The production and use of wool is declining on a worldwide basis





Many Species of Mammals are vital for our Supply of Food or Commodities  
 Sheep, Goats and other Species serve us – often in rural Areas



Postal Stationery Postal Card – Persia-

The world production of *Wool* is shorn from estimated 1 billion *Sheep* and is used for many purposes like clothes and knitting yarn

Sheet from French stamp booklet - advertising woolen knitting yarn

tarifs : France et Colonies : Lettres et paquets clos, 0,30 jusqu'à 20 g. inclus; 0,75 au-delà de 20 g. jusqu'à 50 g.; 1 fr. au-delà de 50 g. jusqu'à 100 g.; ensuite augmentation de 0,30 par 100 ou fraction de 100 g.; Max. 1,500 g. Cartes post. ordinaires 0,40; C. post. illustrées 0,40; C. post. illustrées avec 5 mots 0,25. Cartes postales illustrées sans correspondance 0,15.

**ACHETEZ vos**  
**LAINES à TRICOTER**  
 directement à l'Usine

*Vous les paierez bien moins cher!*

Pour vous en convaincre  
 demandez aux

**FILATURES de la REDOUTE**  
 Service 54 à ROUBAIX (Nord)

la collection complète de leurs échantillons envoyée franco.

Un abonnement à "PÉNÉLOPE", charmant journal de Modes et de travaux de laine,  
 est actuellement offert gratuitement en prime à chaque cliente.



Many Species of Mammals are vital for our Supply of Food and Commodities  
And several of them provide us with vital Dairy Products



Booklet containing 20 stamps



Butter



Milk



Cheese

*Dairy products* are generally defined as foods produced from *milk* and they are major provisions for Man  
*Raw milk* for processing generally comes from *Cows*, but occasionally from other mammals such as  
*Goats, Sheep, Water Buffalo, Yaks or Horses*

*Postal Stationery window envelope - issued 1929 - (Printed to private order)  
(Australia Post never issued official envelopes with windows) - Very rare - less than 10 copies exist*

We can Supply  
**Dairy Appliances**  
of all Kinds

**Alfa Laval  
and DeLaval  
Cream Separators**

**Alfa Laval  
Milking Machines**

**Cream Cans, Milk Cans and Buckets  
Butter Churns, Butter Workers and Printers,  
Milk and Cream Testers, Taylor's Calf Food.**

Payment may be made by Cream, Butter, Eggs or Poultry  
Write us for further particulars

**A. W. SANDFORD & CO., LIMITED** GRENFELL ST.  
ADELAIDE  
Phone Central 6770 (5 Lines)



Multifarious Species contribute physically to our everyday Life in many Respects  
 And several of them provide us with vital Dairy Products



Stamped to order

When delivered from the farmers, the Milk was processed in Dairies

Due to the short durability of normal milk, it used to be delivered to households daily in many countries or offered by street sellers



However, improved refrigeration at home and the higher cost of home delivery meant that daily deliveries by a milkman or street seller is no longer available in most countries

Postal Stationery  
 Postal Card  
 Portugal  
 \$ 50

A Dairy





- and so are a large Number of other wildly different Species  
**Poultry is important in many Respects**



Postal Stationery Postcard - Belgian Congo - 5C - issued 1912

Soon after *Man* started to be settled in villages he began to domesticate certain species of birds  
 His future life prospered from the domestication of particularly five species of poultry



Mallard

The five species are  
*Ducks, Geese, Fowls,  
 Turkeys and Pigeons*

The species from  
 which these species of  
*Domestic Poultry*  
 derive still exist in  
 their wild state



Greylag Goose

Rock Dove

By breeding special characteristics from these original species, he now has  
 a large number of subspecies

Red Junglefowl

Common Turkey





- and so are a large Number of other wildly different Species  
Poultry is important in many Respects



Pre-philatelic service letter dated 21st April, 1811 - Sent from the Italian Municipality GUALDO

Printed on  
paper with fold



Since *Fowls* were first domesticated they have been more important to *Man* than any other bird

Many billions of *chickens* are reared annually as a source of food, for both their *meat* and their *eggs*



*Chickens* farmed for meat are called *broiler chickens*, whilst those farmed for eggs are called *egg-laying hens*









- and so are a large Number of other wildly different Species  
Poultry is important in many Respects



The lifespan of a chicken is short  
It is hatched in a machine and raised in captivity  
After 40 days it is slaughtered in a poultry slaughterhouse

In Denmark alone more than 100 million of chickens are raised and slaughtered each year so worldwide the number is counted in billions



Below: Postal Stationery Postal Card - Hungary - 1897

Depicting a chicken slaughterhouse





- and so are a large Number of other wildly different Species  
**Poultry is important in many Respects**



Booklet containing 8 stamps

Ducks have been farmed for thousands of years, possibly starting in Southeast Asia

The domestication of Geese is of very ancient date, with archaeological evidence for domesticated geese in Egypt more than 4,000 years ago



Artists Drawing

Official stamp and signature on back





- and so are a large Number of other wildly different Species  
**Poultry is important in many Respects**

**CARNET de 20 TIMBRES-POSTE de 0<sup>f</sup> 50 — 10<sup>f</sup>**

25, Rue Bergère, PARIS (9<sup>e</sup>) S. 406.

les bons foies gras...  
les truffes du Périgord

**ACHETEZ LES DIRECTEMENT AU PRODUCTEUR**

Nous OFFRONS POUR **100 Frs.**  
(Franco domicile)

Notre colis du Vrai Gourmet, contenant :

- 1 Boîte pâté foie gras bien truffé pour 12 personnes
- 1 Boîte pour 4 personnes
- 2 Boîtes pour 4 personnes
- 2 Boîtes pour 2 personnes

A la demande, une des boîtes 2 personnes peut être remplacée par 1 Boîte de truffes pour truffer volailles

Règlement par mandat-chèque ou chèque postal BORDEAUX 536-93

**PERIGORD-SPECIALITES**  
PÉRIGUEUX

Valeur réelle 40 %, supérieure à ce prix exceptionnel

**CONTRE LA CHUTE DES CHEVEUX PETROLE HAHN**

**Blédine**  
LE MEYRAGE

**Blédine**  
SECONDE PÂQUE

In Europe, Northern Africa and Western Asia, the original domesticated geese are derived from the *Greylag Goose (Anser anser)* and are kept as poultry for their meat, eggs, and down feathers



On some farms particularly in France the *Geese* are force fed to make their liver grow larger and fatter and consequently better for the production of *Foie Gras*

**LES PERLES DU JAPON**  
PRÉPARÉS AU BOUILLON OU AU LAIT CONDENSÉ

**Un Potage Délicieux**  
Se vendent en BOÎTES RONDES BLEUES seulement  
CHEZ TOUS LES ÉPICIERIS  
Gros: A. CHAPU Paris

---

**LIQUEUR**  
Hygiénique de DESSERT  
**R. REQUIER**  
SEUL FABRICANT  
PÉRIGUEUX (DORDOGNE)  
Distillerie à Vapeur

---

**RHUM LA NEGRITA**  
MONOPOLE P. Bardinot  
Limoges  
AGENTS POUR PARIS:  
L. Maurant & C<sup>ie</sup>

---

LOUIS PLE, 16, Avenue d'Orléans, PARIS  
FABRIQUE DE BOUCHONS, BOUTEILLES EN TOUS GENRES  
Spécialité d'Articles de Caves

**NOUVEAU CHANTIER PARISIEN**  
Permettant de Soulever les Pêches sans troubler le Liquide  
Les avantages incontestables de ce nouveau chantier sont les suivants: Très grande facilité de mise en œuvre, Facilité de laver et baisser les Pêches à volonté sans troubler le liquide, Simplicité de montage, Très grande solidité.  
Prix: 10 Francs

**BOUÏON & HENRAS**  
\*  
**TRUFFES GROS**  
ET FOIES GRAS  
\*  
PÉRIGUEUX-CAHORS

---

**J. GAMBIER** *J. Gambier* QUENTIN & C<sup>ie</sup> 5<sup>me</sup>  
PAPIER RIZ LA \*  
PIPES & ARTICLES POUR FUMEURS  
22, Rue de Bondy, 22, PARIS

---

SEUL PAPIER à Cigarettes contenant du

**GOUDRON**  
de Norvège analysé et prescrit par les Médecins.  
(Voir Journaux de Méd.)  
Seuls Fabricants-Intervenants: JOSEPH BARDOU & FILS  
EXIGEZ leur Nom et leur Cachet de GARANTIE

**PAPIER GOUDRON DE NORVEGE**

---

**GOUTTE RHUMATISMES**  
Guérison Certaine et Soulagement Rapide par la  
**POMMADE LE SAULT**  
Pharmacie DANCOURT, 60, r. Casimir PARIS.

---

**CALFEUTRAGE** Invisible et Hermétique  
Bouvrelets se posant sans effort. V<sup>o</sup> de DAVE, Quai de la Loire, 28, Paris-XXV, Le prospect.

---

**ASTHME** guéri par le **POUDRE ANTI-ASTHMATIQUE**  
de G. FROMAGE pharmacien, 80, r. Lebrun Paris  
La Dose 4 francs franco par la Poste.



**Poultry is important in many Respects**



Above: "Fancy Cancel" from the small town Turkey  
Back-stamped "Turkey Nov. 27, 1930"

Postal Stationery - Portugal - 30P

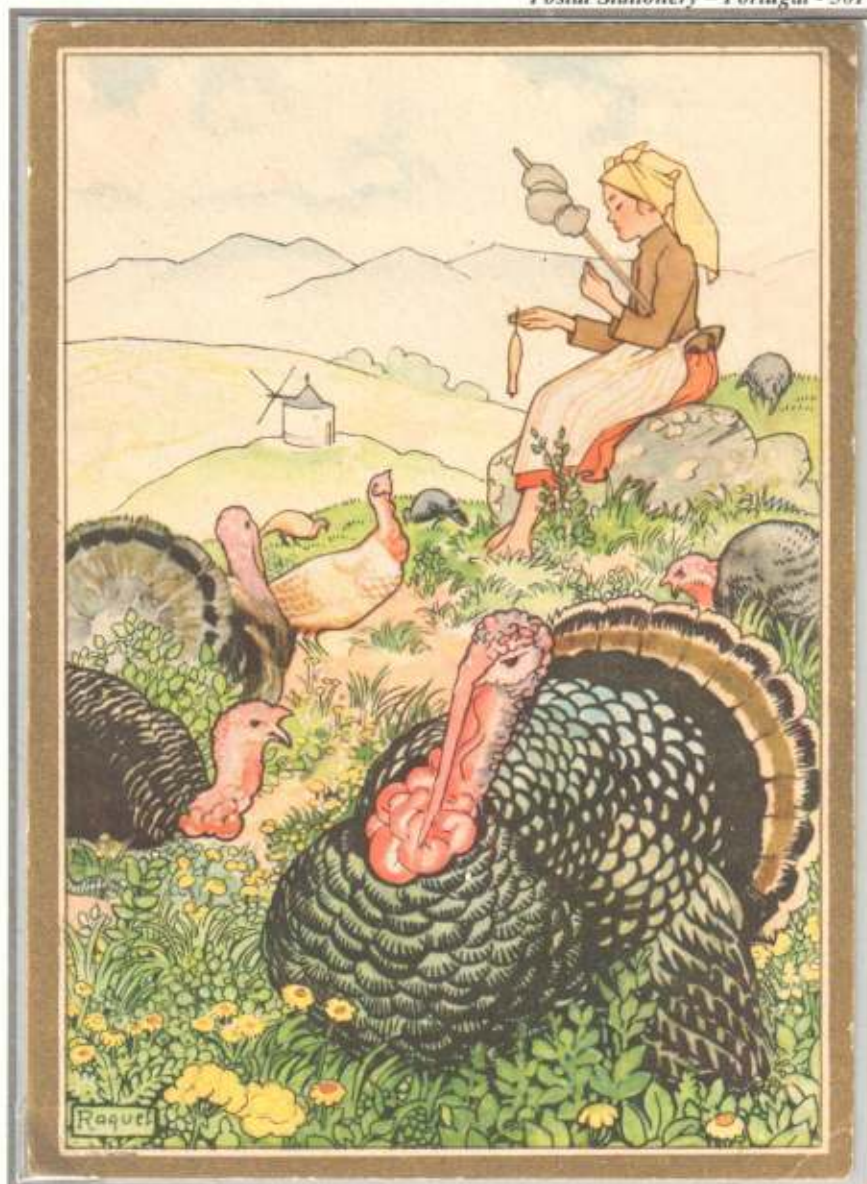
The domesticated Turkey is a large poultry bird

The modern domesticated turkey descends from the wild turkey (*Meleagris gallopavo*) and was domesticated by the Aztecs



Double print on upper stamp  
Text in second print is wrongly "Greylag Geese" (зуси серые) (above stamp) instead of "Turkeys" (индейки)

Greylag Geese





- and so are a large Number of other wildly different Species

## Poultry is important in many Respects



The  
*Ostrich*  
*Farming Industry*  
as an organized industry with  
domesticated *Ostriches* started  
in approximately 1863 in  
Oudtshoorn, South Africa



Statistics from 1865 bear proof of a mere 80 domesticated *Ostriches*. Within 30 years this figure grew to 253 464 *Ostriches* producing a crop of 160 740 kilos of feathers and in 1913 the export was 450 000 kilos produced by 776 000 *Ostriches*

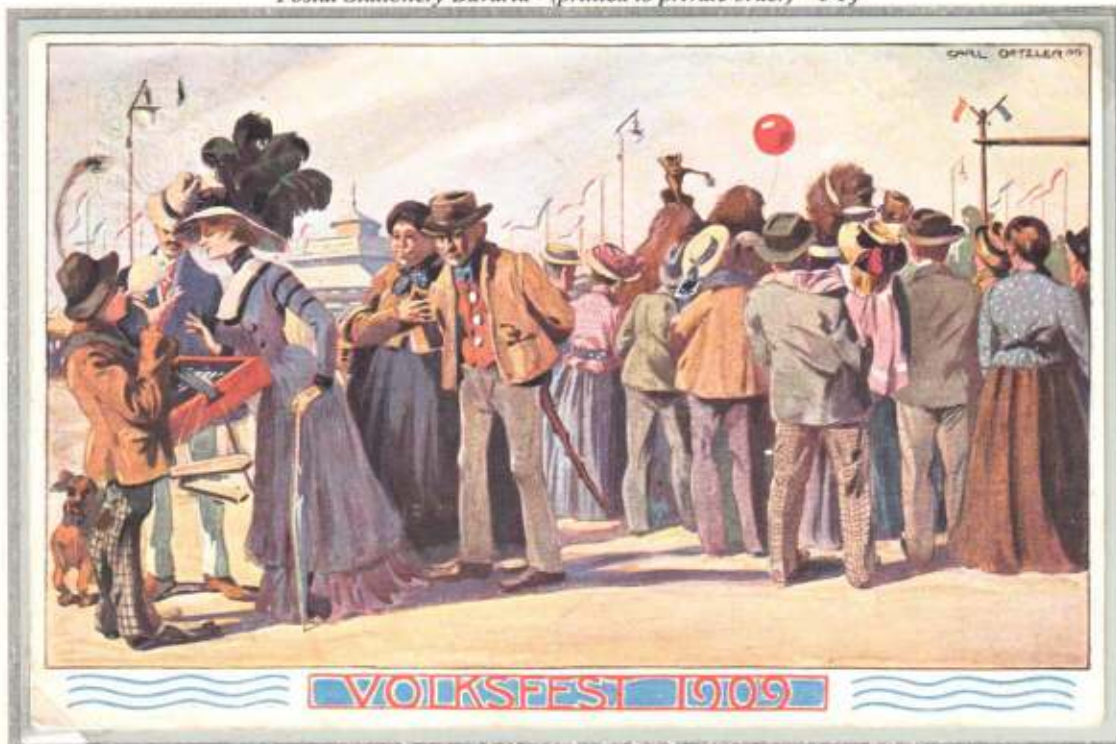
### *Inverted center*



Today there are *Ostrich* farms in many parts of the world and they produce a large number of commodities such as feathers, eggs, leather and food

The leather is suitable for belts, handbags and other products and the fillet is a gourmet dish  
The lady depicted on the postal card below is wearing a hat ornamented with *Ostrich Feathers*

### *Postal Stationery Bavaria - (printed to private order) - 5 Pf*









- and so are a large Number of other wildly different Species  
Poultry is important in many Respects



Offizielle Volksfest-Postkarte.

WILH. TUMMEL, NÜRNBERG

Postal  
Stationery  
Postal Card

Bavaria  
5 Pfg

(printed to  
private order)

Feathers from  
Ostriches and  
Peacocks have been  
a popular  
merchandise for  
many years



Copy of front



Stamp from Cölln (Berlin) printed on "Mikado"-paper



Ostrich Feathers  
are one of the most  
important  
commodities from  
the  
Ostrich breeding  
farms

<p>Eis- und Mineralwasser-Grosshandlung Apfelweinkelterei</p> <p><b>B. Finkelstein.</b></p> <p>Hauptgeschäft: Rintheimerstr. 10. Telephon 510</p> <p>Filiale: Zähringerstr. 28. Telephon 510.</p> <p>Grösstes Unternehmen dieser Art Badens.</p>	<p>Buch und Kunst-Handlung des <b>Evangel. Schriftenvereins</b> Kreuzstrasse 25. Telephon 2488.</p> <p>Gediegene Volks- und Jugendschriften Theologische und Pracht-Werke :: :: — Gesangbücher — Bibeln — Neue Testamente in allen Sprachen.</p> <p>Zimmerschmuck. Figuren in Elfenbeinmasse. Alabasterkreuze.</p> <p><b>Geschmackvoll gerahmte Bilder in allen Preislagen.</b></p>
<p><b>Kaiser-Automat</b> Kaiserstr. 95, in Nähe der techn. Hochschule <i>Moderne, sehenswerte Lokalitäten.</i></p> <p>2. Stock: Feinstes Café-Restaurant. Bes.: H. Rein. Telephon 664.</p>	<p>Cigarren- und Cigaretten-Import</p> <p><b>H. SÖLLER</b> Kaiserstrasse 93 Telephon 2235.</p> <p>1a. Qualitäten in allen Preislagen.</p>
<p>Schuh <sup>waren-</sup> - Spezial - Geschäft</p> <p><b>H. FREYHEIT</b> 117 Kaiserstrasse Fernsprecher 1271</p> <p>Grösstes Lager in allen Preislagen. Mitglied des Rabatt-Sparvereins.</p>	<p> <b>Straussfedern,</b> direkten Imports, in grösster Auswahl, von den billigsten bis zu den feinsten Qualitäten empfiehlt</p> <p><b>W. Eims Nachfolger</b> Grossh. Hoflieferant Adlerstrasse 7 Fernsprecher 1486.</p>

Germany -  
"Patentbrief"  
Serie II  
Karlsruhe i.B

5 Pfg.  
issued 1907  
With  
advertisements  
for shops in  
Karlsruhe

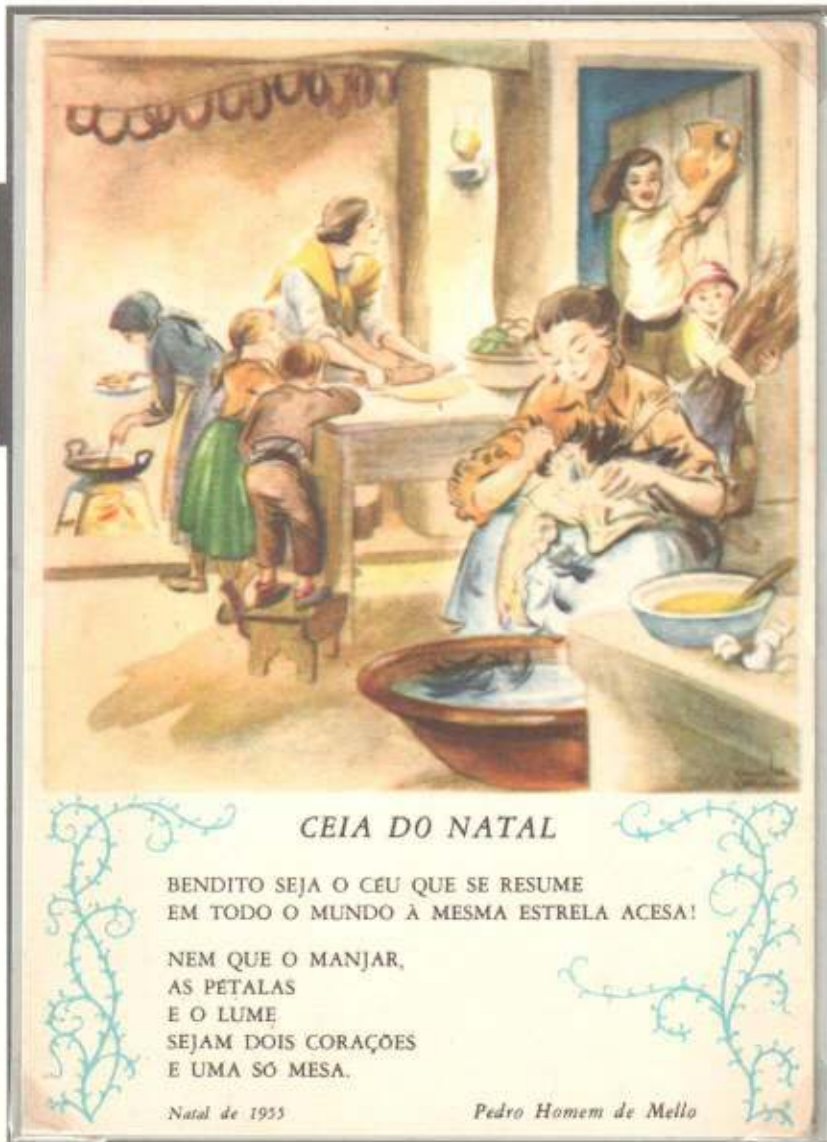


- and so are a large Number of other wildly different Species  
**Poultry is important in many Respects**



*Fried Chicken*

**Meat from Poultry** is appreciated as healthy and nourishing food. The meatiest parts of a bird are the flight muscles on its chest, called breast meat, and the walking muscles on the first and second segments of its legs called the thigh and drumstick, respectively.



**CEIA DO NATAL**

BENDITO SEJA O CÉU QUE SE RESUME  
 EM TODO O MUNDO À MESMA ESTRELA ACESA!

NEM QUE O MANJAR,  
 AS PÉTALAS  
 E O LUME  
 SEJAM DOIS CORAÇÕES  
 E UMA SÓ MESA.

*Natal de 1955*

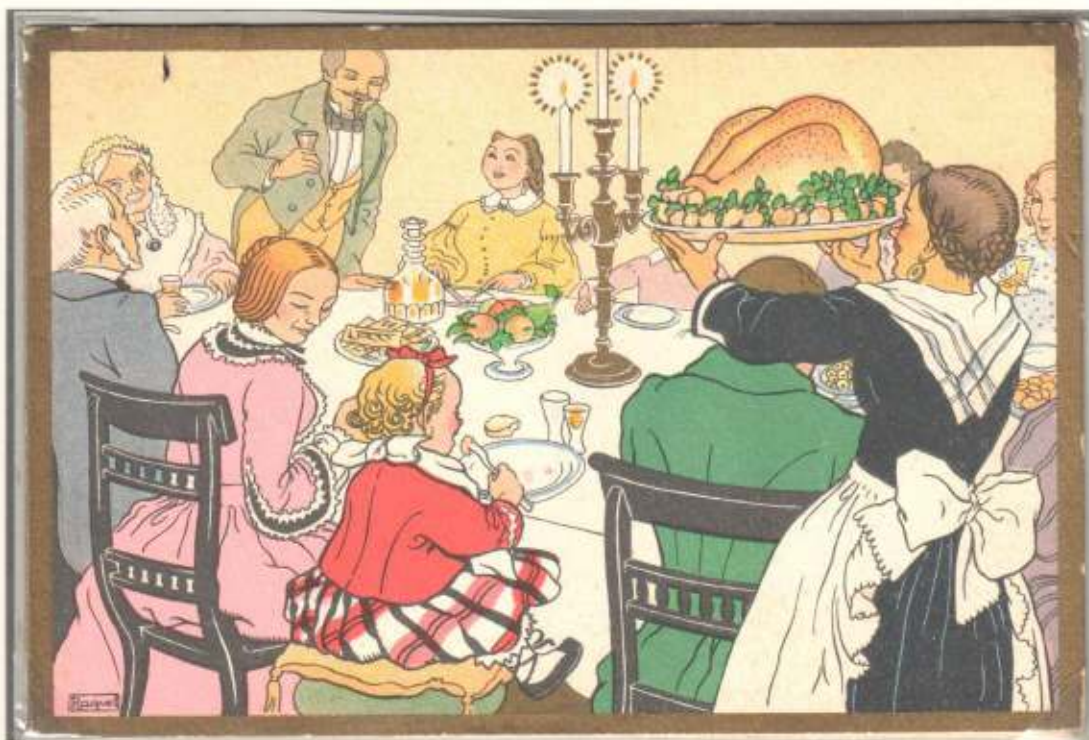
*Pedro Homem de Mello*



*Postal Stationery Postcard*

*Portugal 50 Cts*

*Issued 1955*



*Postal Stationery Postcard*

*Portugal 25 Cts*

*Issued 1940*



- and so are a large Number of other wildly different Species  
**Aquacultures are becoming increasingly important**



The *Salmon* and *Trout* have proved to be reasonably easy to farm at competitive costs

This reduces the demand for fishing particularly the wild living *Salmon*



It is during the last 25-30 years that *farmed salmon* has claimed the unique position globally, which it has today

*Trout Farming* is one of the oldest forms of *commercial fish production*

*Trout farming* dates back over 400 years in Europe, about 150 years in the United States and about 100 years in South Africa



*Fancy cancel from Red Fish, LA*



The *Red Fish* is very popular as *farmed fish* in many parts of the United States





- and so are a large Number of other wildly different Species  
 Aquacultures are becoming increasingly important



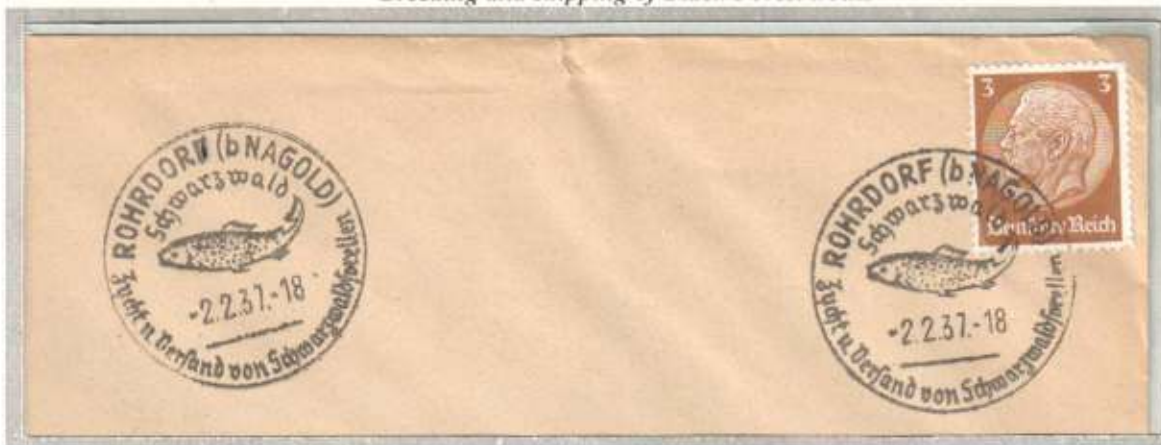
Envelope sent by M.C.Trout, MC, who correctly signed it in upper right corner verifying his free frank privilege  
 Trout is an English medieval occupational name for a man who operated a trout farm  
 In medieval times all monasteries and most major houses would have had a designated trout lake



Million of tons of Trout are produced and consumed every year on a worldwide basis and as each trout weighs around 300-500 gram the total quantity of produced fish makes trout one of the largest number of individuals of one species subjected to man



Breeding and shipping of Black Forest trouts



Artificial fertilization

Fertilized eyes trout

Trout fingerlings

Adult trout - male





- and so are a large Number of other wildly different Species  
 Aquacultures are becoming increasingly important



The *Carp* originates from the Far East and it is believed to be the first species of *fish* bred in aquaculture



*Carp*s are served at small specialized restaurants called **KARPFENSCHÄNKE**



This cover has a very rare "Posthilfsstellenstempel" from Meissen which is located in Moravia





- and so are a large Number of other wildly different Species  
 Aquacultures are becoming increasingly important



Official mail sent 1907 from the village Orgoesti on the water-course Burlad in the Moldavia county, Romania  
 (The covers is post free as it has been mailed from the town hall)



Spawn and sperm are mixed

Citizens of this village and the village Dobridoru - (letter below) depend on production of Carps and therefore the fish is depicted in the town city arms to emphasize how important it is for the villagers



Official mail sent 1903 from the village Dobridoru on the river Jiu in the Oltenia county, Romania  
 (The letter is sent from the town hall and therefore post free)





- and so are a large Number of other wildly different Species  
 Aquacultures are becoming increasingly important



Oysters are a delicacy and are produced in large numbers in Oyster Farms

Oyster Farming was practiced by the ancient Romans as early as the 1<sup>st</sup> century BC

Tarifs : **Étranger** : Lettres 1 fr. jusqu'à 20 g. Inclus, ensuite 0.50 par 20 g. Maximum 2 kgs. Cartes postales 0.60.

VENTE DIRECTE DE LA FABRIQUE PRODUITS DE GASCOGNE SÉLECTIONNÉS M <sup>me</sup> PELLISSON-BAUDOIN, CONDOM (Gers) 1925	
1 Pâté de foie gras truffé	280
ou 2	120
1 Galantine truffée	280
ou 2	120
1 Pâté pur porc	280
ou 2	120
1 Cassoulet	500
1 Boîte petits pois extra-fins à l'ét.	500
1 Boîte haricots verts extra-fins	500
FRANCO DOMICILE contre Mandat. 33 <sup>fr</sup> ALGÉRIE ET CORSE .. 35 <sup>fr</sup> 50 ou contre remboursement 1 <sup>fr</sup> 35 en plus Chèques postaux BORDENAVE n° 1504 Prix courant sur demande	

HUITRES PORTUGAISES (1 <sup>er</sup> Choix)	
Consommateurs, recevez directement des parcs d'élevage !	
Colis 10 kilogs, foo domicile	
De 100 à 120 ..	15 fr. 60
• 140 à 150 ..	16 fr. »
• 180 à 200 ..	17 fr. 50
Colis 5 kilogs, foo domicile	
De 50 à 60 ..	9 fr. »
• 70 à 75 ..	9 fr. 15
• 90 à 100 ..	9 fr. 90
Contre mandat à DEJARNAC, à Arès (Gironde)	
Abonnements pour envois hebdomadaires	

Sheet from French stamp booklet advertising "Huitres Portugaises" (Portuguese Oysters)



Letter postmarked "Marennnes" (France) dated 29th July, 1846

"Marennnes" is a commune in the Charente-Maritime department of south-western France and is a center for oyster farming



Marennnes-Oleron is by far the largest oyster cultivation area in all of Europe and up to 60,000 metric tons of oysters are produced each year



- and so are a large Number of other wildly different Species  
**Aquacultures are becoming increasingly important**



The production of *Mussels* and *Clams* is a widespread industry in many parts of the world and in cold as well as warm waters depending on the species produced



In French Polynesia the production of seeds takes place in large tanks and in Saint Pierre et Miquelon nets submerged in the water are used at a later stage of the production



In the grow-out stage, the mussels are attached to a series of buoys and ropes

Attached to a longline at regular intervals is the growing line, which is a single rope that can be up to several kilometres long

*Offset of frame*

*Double print of green colour*



*Double print of frame*



*Mussel farming* has a long history that dates back to the thirteenth century

They are today farmed in many areas of the world and in 1997, 1.1 million tonnes of mussels were produced worldwide

*Error: Missing black colour*





- and so are a large Number of other wildly different Species  
Aquacultures are becoming increasingly important



*Shrimps and other Crustaceans are being produced in basins*



*Wrapper- GB - Stamped to order*

Commercial farming began in the 1970s, and production grew steeply, particularly to match the market demands of the U.S.A., Japan and Western Europe

The total global production of farmed crustaceans reached more than 1.6 million tonnes in 2003





- and so are a large Number of other wildly different Species  
**Aquacultures are becoming increasingly important**



Many species of *Turtles* are in danger of extermination because they are very desired for their flesh



Giant Tortoise

The *Green Turtle* ("soup turtle") is bred at a *Turtle Farm* on Cayman Islands and this production covers the need for consumption on the islands so it is no longer necessary to catch wild *Turtles*

At the island Mauritius conservation projects have been successful and the *Giant Tortoise* is now bred in captivity



Variety:  
 Missing colour and colour shift





- and so are a large Number of other wildly different Species  
**Aquacultures are becoming increasingly important**

The *Giant Clam* is a family with 6 sub-species which are all produced in *aquacultures* in the Pacific Ocean



The initial interest in farming *Giant Clams* began in the 1970's

Once a *clam* is planted into a place and begins to grow it stays attached to that spot for life

The largest species – *Tridacta gigas* – grows into a size of 1.2 metres across and can weigh more than 225 kilograms



All species of *clams* are produced for their *meat*, which is considered very delicious and also for the *shell* which is used for decorative dishes, jewels and ornaments



Mother-of-pearl artist

As they are very popular because of their beautiful colours and relatively easy to care for in aquarium conditions they are also produced and sold in large quantities as juveniles for that purpose





- and so are a large Number of other wildly different Species  
Animals are bred in Captivity to provide us with Furs and Skin



*Very rare lithographic die proof - on ordinary paper  
Ex Litographic Kraft LTD archive*



Chinchilla

*Chinchillas and Mink are farmed in large numbers to  
provide the trade with fur for exclusive clothing*



*Artist's preliminary drawing - Mink*





- and so are a large Number of other wildly different Species  
 Animals are bred in Captivity to provide us with Furs, Skin – and Pearls



*Farming of the Canadian Fox started in 1895 on Prince Edwards Island and the industry soon became very important producer of fur for production of ladies' fur garments*

**BON POUR 10% DE RÉDUCTION**  
 offert aux titulaires par la fabrique de  
**FOURRURES CANADIAN-FOX**  
 9, RUE GEOFFROY-MARIE — PARIS-9<sup>e</sup>  
 Médaille d'Or 1933  
 VEND DIRECTEMENT AU DÉTAIL  
 AU PRIX DE GROS

**35% moins cher**

**GRAND CHOIX DE BEAUX RENARDS**

**JOLIE JAQUETTE POULAIN**  
 (Valeur 690 Frs)

**EN RÉCLAME : 390 Frs**

Une des rares maisons pouvant vous adresser un choix à domicile sans obligation d'achat

**DEMANDEZ NOTRE CATALOGUE GRATUIT C. P.**  
 ———— Facilités de paiement sur demande ————

TANNAGE - TEINTURE DE PEAUX - TRANSFORMATIONS

**50.000 Frs** de PRIMES seront distribués cet hiver à nos Clients, à titre publicitaire — —

PUBLICITE CHEQUES POSTAUX SERTIC, 97, Rue Saint Lazare, Paris IX<sup>e</sup>

MANTEAUX ET GARNITURES






- and so are a large Number of other wildly different Species  
**The Honey Bees pollinate Flowers and collect Nectar for Honey**

Missing yellow  
 colour and  
 colour shift



There are thousands of  
*honey bees* in a hive and  
 they are literally crawling  
 on top of each other in a  
 close community



They collect *nectar* from  
 flowers for production  
 of *honey* and at the same  
 time they *pollute* the  
*fruit trees*



Normal Stamp      Printed on gumside

This makes them  
 indispensable for the  
 growing of *fruit* and  
 other *crops*





- and so are a large Number of other widely different Species  
**The Honey Bees pollinate Fruit Trees for Fruit Production**



Upward shift of black colour on left stamp

When the *Honey Bee* lands on a flower, it brings *pollen* from the flowers it visited before and this *pollinates* the next flower



Apples

Colour shift on right stamp



Figs

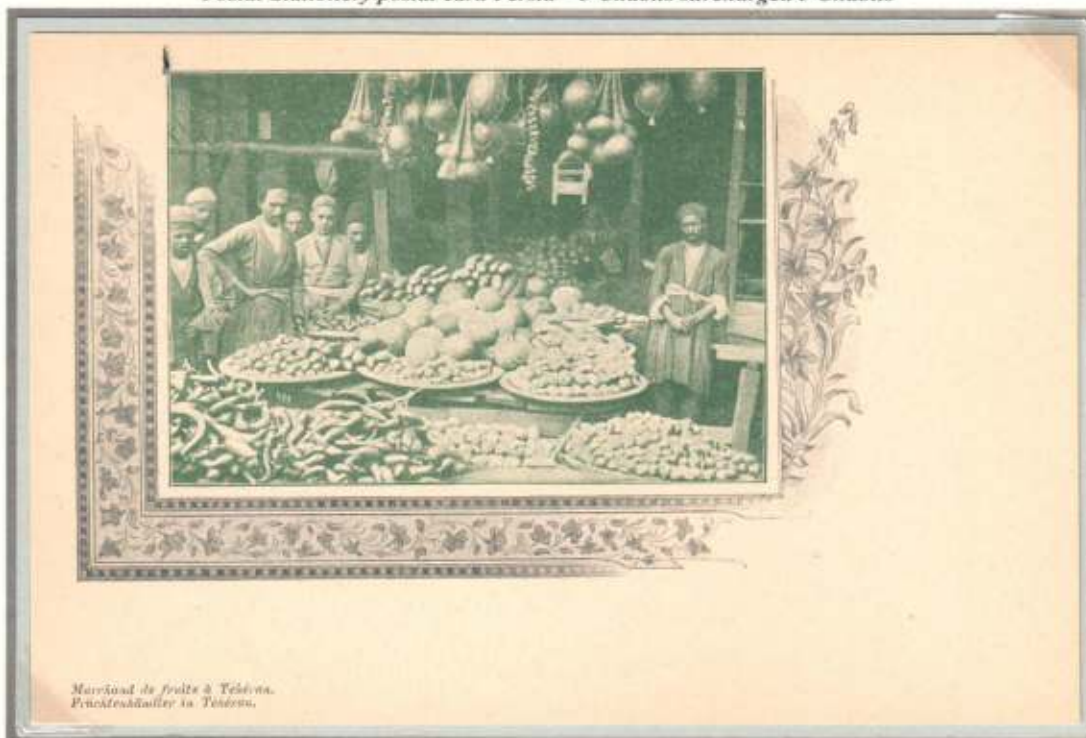


Jack Fruit Tree



Cherries

Postal Stationery postal card Persia – 3 Chablis surcharged 5 Chablis



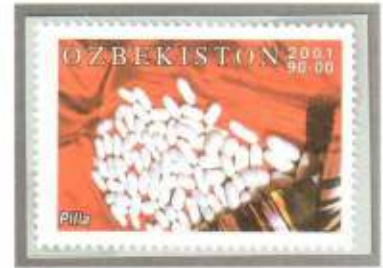
Marché de fruits à Téhéran.  
Pouchtesballees in Téhéran.



- and so are a large Number of other wildly different Species  
 - while the patient Silkworm produces Miles and Miles of Silk



The production of *Silk* was first developed in ancient China, possibly as early as 6000 BC and definitely by 3000 BC



The *Silk Moth* lays its *Eggs* on the leaves of mulberry tree which the *Caterpillars* feed on and eventually the Caterpillar will within 2-3 days spin about 1 mile of *Silk* and be completely encased in a cocoon

*Silk* is nowadays produced worldwide and the total production exceeds 40.000 tons annually



High class textiles made from *Silk* are usually rather costly



Paper with *silk threads* have been used by postal administrations like Bavaria and Switzerland in order to make forgeries more difficult



Postal Stationery Postal card – Persia

Depicting *silk weavers* in Rescht, Persia





We use many Species for Entertainment and Pastime  
 They are there for us to enjoy – in Animal Parks and Zoos



Menagerie Schönbrunn

“Tiergarten Schönbrunn”  
 (literally, “Schönbrunn Zoo” or “Vienna Zoo”),  
 is a zoo located on the grounds of the famous  
 Schönbrunn Palace in Vienna, Austria

A menagerie is a form of keeping common and  
 exotic animals in captivity that preceded the  
 modern zoological gardens



Founded as an imperial menagerie in 1752, it is the oldest zoo in the world



*Rhinos*  
 and *Leopards*  
 are usually some of the  
 large variety of species  
 of animals presented to  
 the visitors

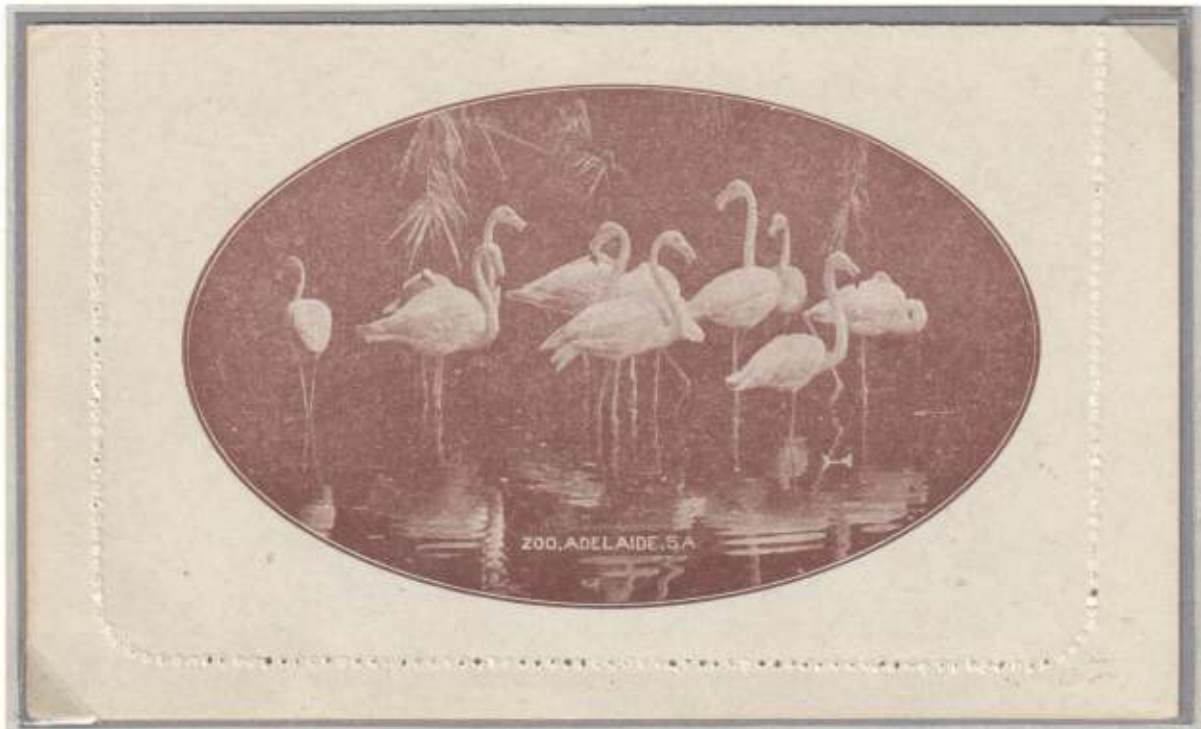


Right stamp:  
 Waterlow & Sons Ltd.  
 Specimen  
 Colour trial





We use many Species for Entertainment and Pastime  
 They are there for us to enjoy – in Animal Parks and Zoos



Australia – Lettercard - One Penny

Error: Missing red color on right stamp



Visitors to zoos are often welcomed by a flock of flamingoes at the entrance

And outside the zoo buildings there often is an outdoor aviary housing a number of other species



Postal Stationery  
 Postal Card  
 Germany  
 5 Pfg  
 Printed to private order



We use many Species for Entertainment and Pastime  
They are there for us to enjoy – in Animal Parks and Zoos



Shift of light green colour on left stamp

There are almost 10,000 species of birds in the entire world

They inhabit almost all parts of the world from north to south – east to west – and on land as well as sea, and many of them can be watched in zoos



Missing blue colour left stamp

Aviaries and other bird enclosures are found in all zoos



Numerous species can be watched in zoos and aviaries giving the public the opportunity to watch birds which cannot be found in their neighbourhood



And many endangered species are bred for re-introduction into the wild to strengthen the endangered population

Postal Stationery (printed to private order) - Deutsche Reichpost - 5 Pf - 1899



Vogelhaus: Innere Ansicht. Dresden, 1899.

Vogelhaus: Innere Ansicht.

Gruss aus dem Zoologischen Garten zu Dresden.



We use many Species for Entertainment and Passtime  
They are there for us to enjoy – in Animal Parks and Zoos



**Jurong Bird Park**  
(African Waterfowl Aviary) in Singapore is a world-famous bird zoo where there are specimens of magnificent bird life from around the world

It is currently the world's largest bird park in terms of number of birds, and second largest both in number of bird species and land area (after Germany's Weltvogelpark Walsrode)



The Bird Park has areas with wetlands, rainforests, arid areas and other types of environments adapted to the living conditions of different species



There are 5,000 birds of 400 species in *Jurong Bird Park*

29 of the species are threatened in nature and the park is making efforts to breed these species

Colour shift on right stamp



Misperforated right stamp



The Aviary provides the visitors with a unique opportunity to watch birds roost, bathe, feed and even raise their young in their nests

There are large, central walk-in aviaries and peripheral aviaries that house the more delicate or territorial birds



A daily simulated mid-day thunderstorm is followed by a cool, light drizzle

Territorial species are kept in large cages, while species that can coexist with each other are left to fly free in the aviary





We use many Species for Entertainment and Pastime  
They are there for us to enjoy – in Animal Parks and Zoos



Modern Zoos can show species of birds like Penguins which require special conditions to thrive

Yellow colour missing on upper stamp (the beak)



Misperforated block



Many species of Penguins are kept in zoos all over the world and given the ultimate conditions the penguins will breed in captivity

Their caves are with a cold-water swimmingpool and often with artificial snow

Such enrichment helps satisfy both the physical and psychological needs of birds and consequently also gives visitors to the zoo a better experience





We use many Species for Entertainment and Pastime  
They are there for us to enjoy - in Animal Parks and Zoos



Brown color (legs) missing on right stamp

The Tierpark Dählhölzli, or Dählhölzli Zoo, is the public zoo in Bern, Switzerland, which opened in 1937 and is operated by a private association, the Tierparkverein Bern

The zoo is situated on the bank of the River Aare near the historical city center



Brown (legs) missing on bottom stamp

The zoo exhibits some 3,000 animals and birds (more than 250 species) on 15 ha (37 acres) and is known for its comprehensive selection of species from Northern Europe



Value missing

Inverted center

Issued stamps

But also many exotic species of birds from other parts of the world can be watched and admired in the aviaries





We use many Species for Entertainment and Pastime  
They are there for us to enjoy - in Animal Parks and Zoos



Missing colors upper stamp

The  
Snowdon Aviary  
in London Zoo



The Snowdon Aviary is now the home of numerous species of birds, including a large collection of Parrots



Missing blue colour upper stamp



Frame plate proof with security puncture holes

Imperforated plate proof with printers correcting circles and security puncture holes



Perforated proof with security puncture holes



Issued stamp





We use many Species for Entertainment and Pastime  
They are there for us to enjoy – in Animal Parks and Zoos



Letter from Guanajuato, Mexico to London, dated June 14, 1840 - Shipped onboard "Opossum"  
**Opossum** (Manicou)



Some zoos keep fewer animals in larger, outdoor enclosures, confining them with moats and fences, along with the cages, for the benefit of visitors who can then watch them in more natural environments

Complete booklet  
Vertical perforation missing



Mountain Goat

*Only 5 copies of this postcard are known to exist*  
Postal Stationery Postal Card – Deutsche Reichpost – 5 Pfg





We use many Species for Entertainment and Pastime  
 They are there for us to enjoy – in Animal Parks and Zoos



The *Okapi* is becoming rare in nature, and in fact there are more *Okapis* living in zoos than in wild life

After World War Two, zoological thinking began to take it's modern form, and the zoos began to take also the roles of conservation facilities and everything that comes along with it

*Offset of print on back of block*



The *Snow Leopard* is one of the most endangered species in nature and is now being preserved in zoos

The *Mountain Gorilla* is also endangered in nature and breeding in zoos helps the species to survive





We use many Species for Entertainment and Pastime  
They are there for us to enjoy – in Animal Parks and Zoos



In many modern Zoos it is possible for the visitors to have physical contact with some of the animals although most of them are behind fences like the always popular various species of primates



RRRR - Folded cover from Bolivia 1836 - sent from **CHINCHA** to Nazca - Rate "2 h"  
Backstamped "Administracion de Correos de YCA" with flags and shields cachet

The word "**CHINCHA**" means "**Jaguar**" and derived from "**Chinchay**" or "**Chinchas**" or "**Cinca**" in the native language spoken by the **CHINCHA**-tribe in Peru in the eleventh century

The **CHINCHAS** worshipped a **Jaguar God** and believed themselves to be descended from **Jaguars**



Like other big cats the  
**Jaguar**  
is an exiting animal and always  
popular in the Zoos



Set of 5 progressive colour proofs





We use many Species for Entertainment and Pastime  
They are there for us to enjoy – in Animal Parks and Zoos



旭山動物園・ゴマフアザラシ

Many of the secrets of the life in the sea are demystified in the very large **Aquaria** which are established in many countries

It is possible here to watch fish and other creatures from deep sea and coral reefs



Colour shift on upper stamp



- creatures which very few people would ever have a chance to see in real life

**Argonauta**  
(an Octopus Species)



Postal Stationery  
50 Y  
Japan

**Ship endorsement "per Argonauta"**

Letter sent from Cuba to Spain

In pre-UPU times the sender could indicate the route which an international letter had to travel. Ship names and departure dates were published in the post offices and senders could direct their mail depending on security, speed and different tariff systems





We use many Species for Entertainment and Pastime  
They are there for us to enjoy – in Animal Parks and Zoos

A dolphinarium is an aquarium for dolphins

The dolphins are usually kept in a large pool, though occasionally they may be kept in pens in the open sea, either for research or for public performances



*Dolphins*  
are considered to be some of the most intelligent animals

They are often seen performing in dolphinariums and are used in Assisted Therapy for children

Artwork for the printing of stamp to the left

3



BOTTLENOSE DOLPHIN  
DELFIN MUDAR



We use many Species for Entertainment and Pastime  
They are there for us to enjoy – in Animal Parks and Zoos



Error: Black colour missing

Error: Black colour missing

Postal Stationery issued by The People's Republic of China



Snakes - even venomous ones - can be watched at close range in Snake Parks

Thousands of snakes are kept outdoors on the *Feilong Island* (or *Flying Dragon Island*) (above card) which is a tourist resort where visitors can take photos, watch performances, buy snake products and eat snakes



Left stamp missing background colour



The visitor can bring back various souvenirs from the visit to the island –

- a memory of a shiver when he saw the fangs of a *Black Mamba*

- or a handbag made from the skin of *Python Snake*

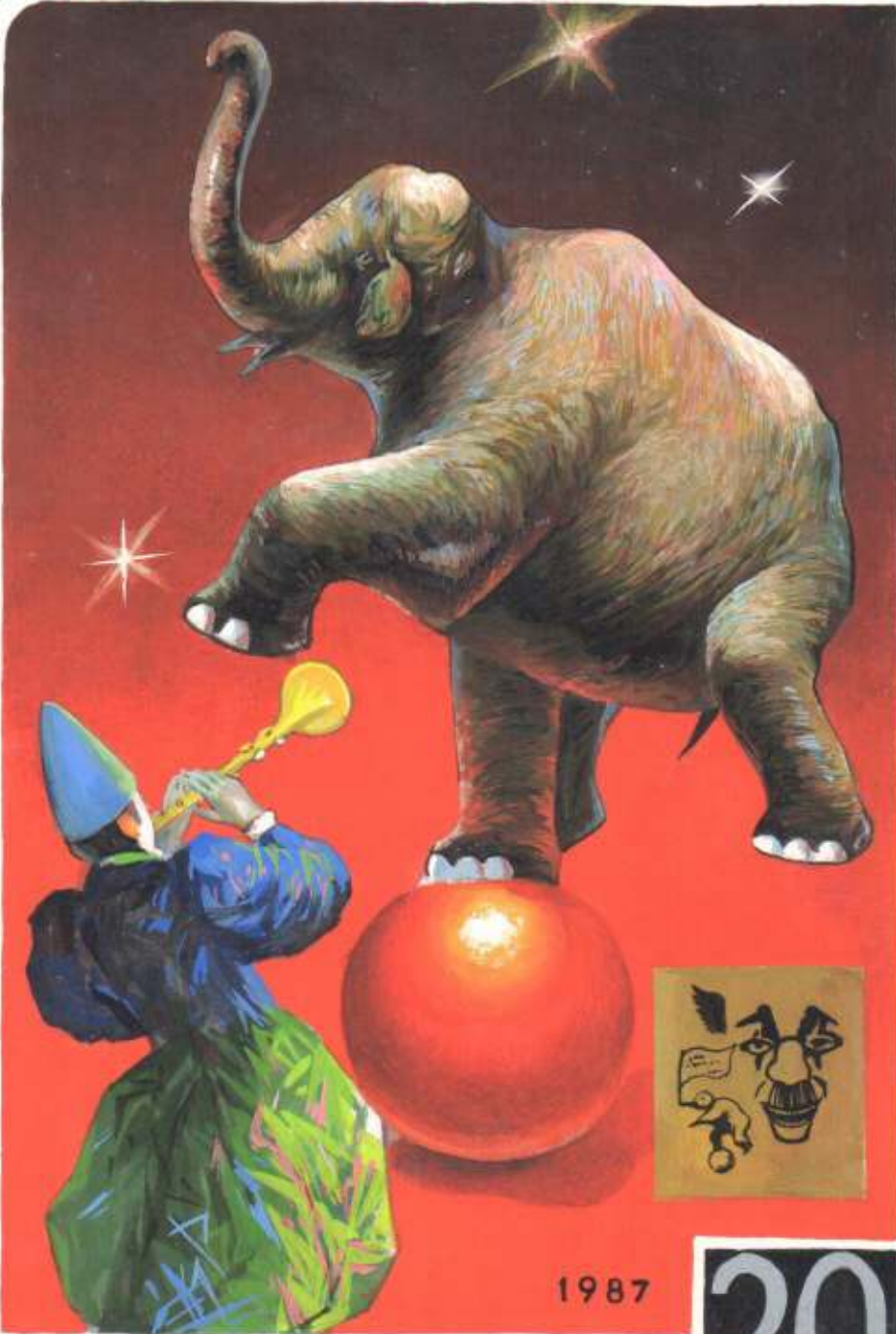




We use many Species for Entertainment and Pastime  
- and we gape at them in Circus

MONACO 모나코국제교예축전

INTERNATIONAL CIRCUS FESTIVAL IN



1987

조선우표 DPR KOREA 20전

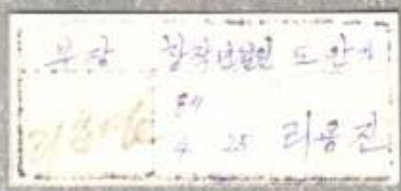


The *Elephant*  
- the largest land living mammal in the world -  
is always a very popular feature in a circus show where it is trained to perform with various acts



Artists drawing for stamp

Copy of artists signature and various postal references on the back





We use many Species for Entertainment and Pastime  
 We should not forget Pets which we love – for what they are -

Forlag: Staffan Ullström  
 Gravör: Czesław Szaniłowski och Lars Sjööblom  
 Ömslag: Jan Magnusson



Birds commonly occurring in certain parts of the world like above Scandinavian birds, will often be kept in captivity somewhere else as "exotic birds"

Postal Stationery Card issued by the Japanese Military Postal Service - Used in China during WW II



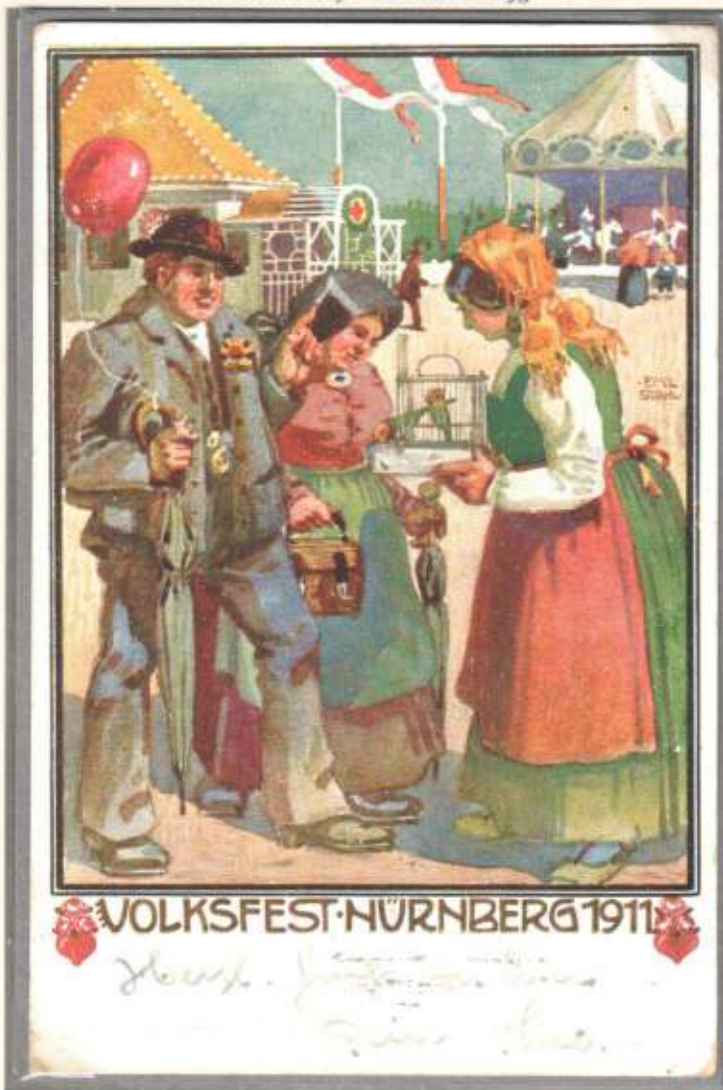


We use many Species for Entertainment and Pastime  
 We should not forget Pets which we love – for what they are -



The Comune di Gabbiano enjoyed free frank privileges and the letters were cancelled with a round cancel depicting a Bird Cage because the main occupation of its citizens was production of cages

Postal Stationery - Bavaria - 5 Pfg



Parrots are very popular cage birds

They have been kept as pets for hundreds of years

Missing Plumage



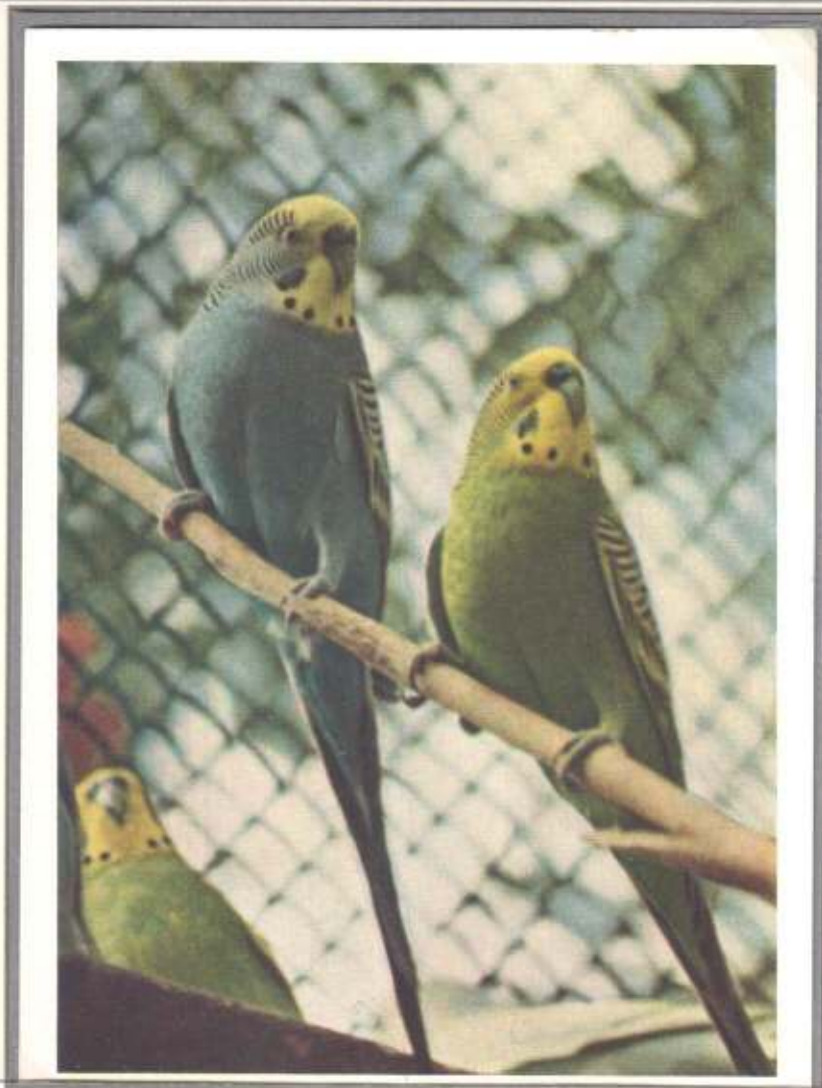


We use many Species for Entertainment and Pastime  
 We should not forget Pets which we love – for what they are -



Parrots were kept as pets for their beauty and mystery nearly four centuries ago in ancient Egypt

Ancient Romans kept and held birds as well and it was considered the duty of a slave to care for the domesticated animal



Postal Stationery  
 Russia  
 3 Kop



Above

*Competition Essay  
 South Australia 1891*

*Engraved 1 d  
 Postal Stationery  
 Postal Card with  
 hand-drawn designs  
 of Kangaroo, Emu  
 and Cockatoo*

*Nom-de-plume  
 "Ceder et Audux"  
 numbered "15"*





We use many Species for Entertainment and Pastime  
 We should not forget Pets which we love – for what they are -

Back of issued stamp



Local private stamp issue from "Cölln", which is part of Berlin



Left: Enlarged copy of detail

Bird in a Cage



copy

The stamps were printed on paper illustrating the opera of "Mikado"

Hundreds of different species of birds have been captured by fowlers around in the world for many years for the purpose of being kept in cages



The Yellow Canary is one of the most popular cage birds, and particularly because of its song

Japanese Military Mail postal card Used during WWII – with censors mark



Selected breeding has produced many sorts of Canary Birds, with quite different singing repertoires

In Singapore the keeping of Songbirds is an old tradition

Songbird owners gather in coffee-houses with their birds and competitions are held to choose the best singers



Wild birds are caught by fowlers who often would be locals who caught the birds and sold them to the interested public





We use many Species for Entertainment and Pastime  
 We should not forget Pets which we love – for what they are



Red colour missing on 3 stamps on cover



One of the main occupations in the city of Gabbiano (below) was the production of cages (gabbia's)  
 The name of the town was changed to Borgo s Giacomo in 1863

For as long as man has held a fascination with birds, he has understood the necessity for their housing while under his care

Cages display birds, keep them safe from predators and prevent their escape and they should be spacious enough for the bird to move



RRRR

Cover sent 1861 by "Congregazione di Carita di Gabbiano (Brescia)" (a hospital which enjoyed exemption from use of postage)

to the "Municipio di Orzinovi (Brescia)"

The cancellation was in use until May, 1863

(e)

Colour shift and misperforation



Many other species of birds are kept as *Pets* – often captured by fowlers and deprived from their free life

They are kept not only for their song but also for their beauty like the *Java Sparrow* (left)





We use many Species for Entertainment and Pastime  
 We should not forget Pets which we love – for what they are -



Postal  
 Stationery  
 Postal Card

COURIER

Private  
 City Mail  
 Munich

Domestication of  
*Dogs* is believed  
 to have begun  
 around  
 14,000 years ago

A burial site in  
 Germany called  
 Bonn-Oberkassel  
 has joint human  
 and dog  
 interments dated  
 to 14,000  
 years ago



Below:  
 Fancy Cancel  
 correctly used

In 1928 it was strictly  
 forbidden to use a  
 datestamp on front  
 of a registered cover

Backstamped  
 New Haven  
 Oct. 24, 1928

P. O. Box 1206,  
 New Haven, Ct.

REGISTERED  
 36673



L. A. Waddington,  
 22 Bungalow Lane,  
 West Haven, Conn.

28369



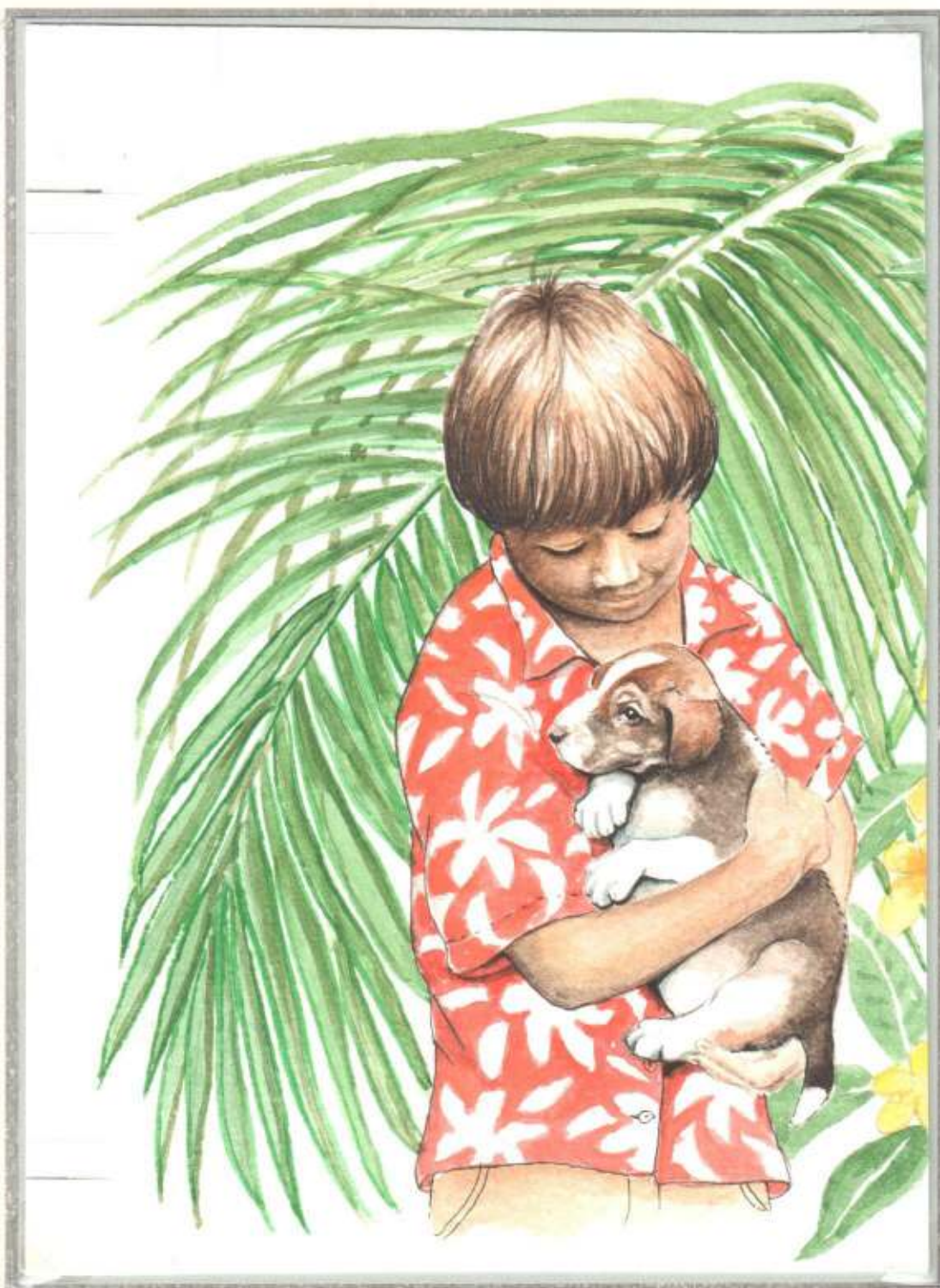
We use many Species for Entertainment and Pastime  
 We should not forget Pets which we love – for what they are -



*Chromalin proof done by Walsall Security Printers on thick card and in full color produced directly from the color separations prior to final production of the printing plates*

*Each color is layered on top of the next thus building up to the full color design. At this stage final color changes and design adjustment are made. Only 4 or 5 chromalin proofs were done*

Children have been attracted to *Puppies* ever since the first *Dog* was subjected to the early Man



*Original final artwork painted by the artist George Bennett*

*Obtained from the Walsall Security Printers archival material*







We use many Species for Entertainment and Pastime  
We should not forget Pets which we love – for what they are -

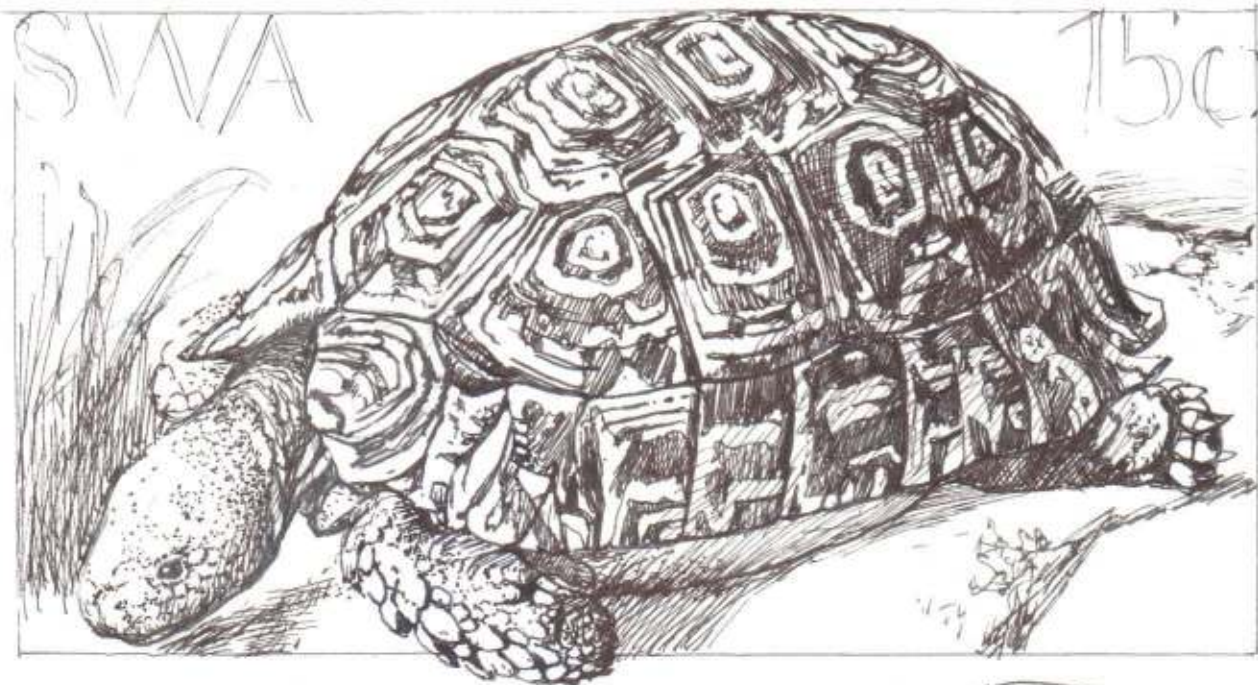


Leopard  
Turtle

The *Leopard Turtle* is the most widely used *pet turtle* which originates from South West Africa

Most of the domesticated *pet turtles* are today bred in captivity

*Artist's original final drawing before colouring*



*Geochelone pardalis*

A.A. Bantje



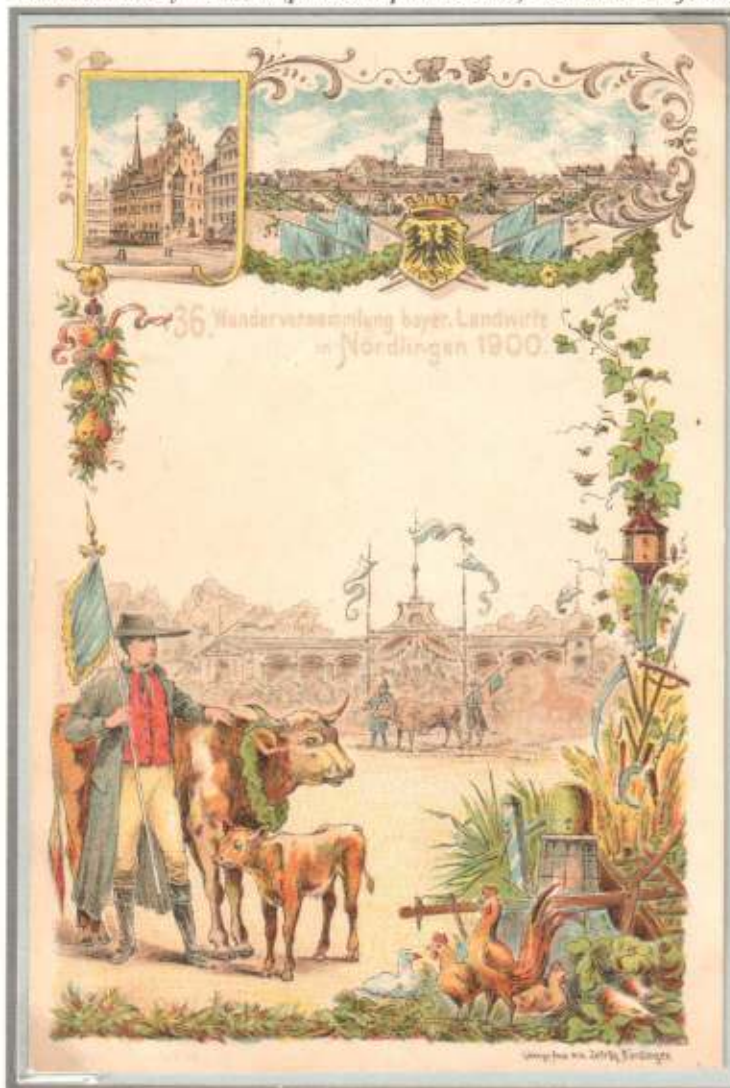
We use many Species for Entertainment and Pastime  
 - and other Animals which we enjoy at Animal Shows



Postal Stationery Postcard – Germany - 5 Pf - (printed to private order)

Postal Stationery Postcard (printed to private order) - Bavaria - 5 Pfennig

The exhibited animals will often be shined up to present themselves as best as possible



New Zealand was the first country in the world to put advertising on the back of stamps

A number of sideface stamps had such adverts printed on the gummed side in 1803 against payment to the Post Office

Soap for Hounds



Washing Dogs and Prize Poultry





We use many Species for Entertainment and Pastime  
 - and other Animals which we enjoy at Animal Shows



All races of Horses are offered on Horse Markets and as well the popular Spanish Horses as Thoroughbreds and less famous breeds like the Himalayan Horse can usually be seen and admired



Red colour missing on left stamp



Letter cancelled Horse Market of Londonderry





We use many Species for Entertainment and Pastime  
- and Snakes handled mysteriously give us Gooseflesh



Cobras

The snake charmers keep the Cobra Snake in a basket and sit in front of it playing a flute or making some movements



Postal Stationery postal card issued by the Japanese Military postal service for use during WWII





We use many Species for Entertainment and Pastime  
- and Snakes handled mysteriously give us Gooseflesh



The *Python* is used for religious and ritual ceremonies



Original drawing by artist Isabel  
Acrylic on art paper  
Rock Python

The *Hopi* Indians in the U.S.A. are using live snakes for their *Snake Dance* which is held in late August

*Fancy cancel showing Snake Dancers*



Proof with security puncture hole

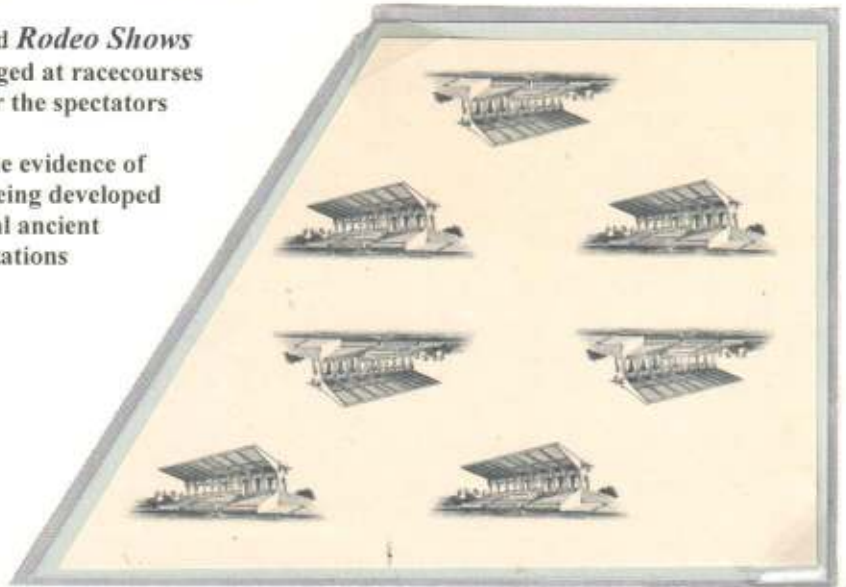




**We enjoy watching Horses hop and run – and we ride on them**

*Horseraces and Rodeo Shows* are usually arranged at racecourses with stands for the spectators

There is some evidence of racecourses being developed in several ancient civilizations



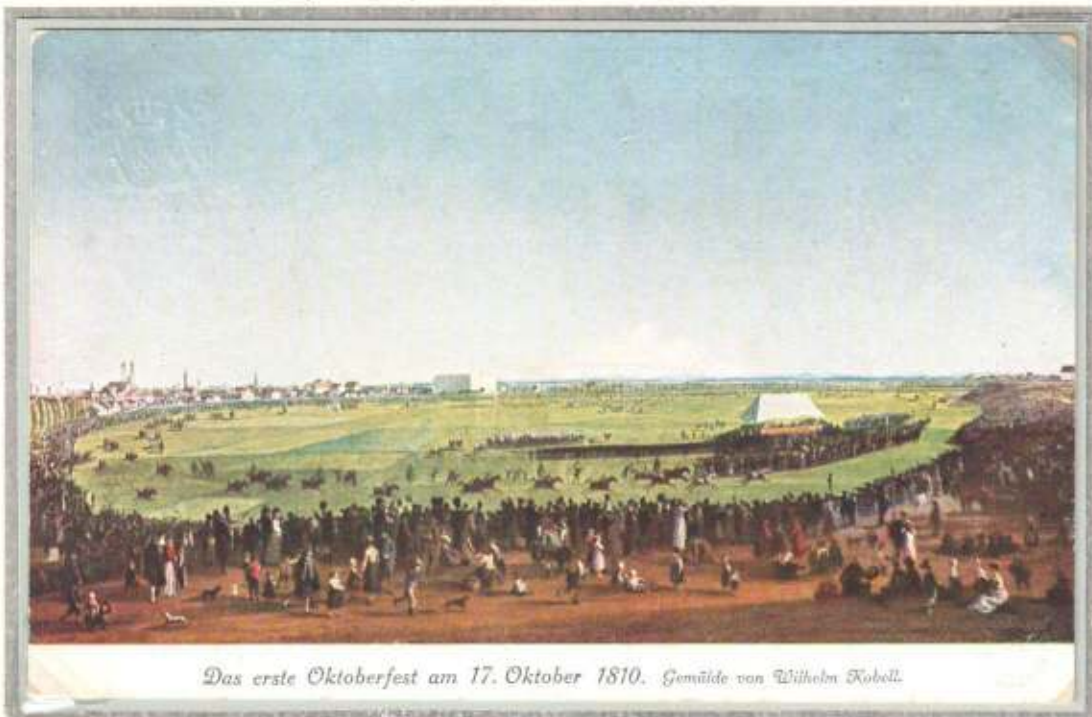
The most impressive ancient racecourses were the hippodromes of the Ancient Greeks and the circuses of the Roman Empire

Error: Value missing



*Wild Horses (Broncos)* had to be tamed before they could be used for riding  
This is now being performed at *Rodeo Shows* as a popular event (above left)

Postal Stationery Postal Card (printed to private order) – Bavaria 5 Pf  
Depicting a painting of the race track in Munich



Das erste Oktoberfest am 17. Oktober 1810. Gemälde von Wilhelm Kobell.



- and we can use them in sporting Events

We enjoy watching Horses hop and run – and we ride on them



Error: Missing colours



Error: right stamp - Missing red colour (jacket)

*Wild Horses* have been broken for many years by cowboys who used them when tending cattle

July 4, 1888, became the birthday of professional *rodeo* when a group of Prescott, Arizona, merchants and professional businessmen organized the world's first formalized "*cowboy tournament*"



Humans appear to have long expressed a desire to know which *Horse* was best in various disciplines and therefore *Equestrianism* is very popular and *Horses* are used in many sports – worldwide spread or local

*Private issue for the postal strike 1971*

The Government announced that the Post Office's monopoly would be suspended and private carriers allowed during the strike



Error: Missing black color right stamp





- and we can use them in sporting Events  
- as well as Birds-of-Prey and fishing Cormorants

The  
*Rock Ptarmigen* is a  
popular game bird for  
*Falconers*  
because of its fleshy and  
delicious meat



*Proof of background colour*

It lives in mountainous  
areas in most of Northern  
Europe including Iceland,  
where it is hunted by  
*falconers* using the  
*Iceland Falcon*  
for the hunt



Bottom stamp  
*Proof on thin  
paper on card*

*Original artwork  
By the designer  
"P. Lambert"*

*The engraver  
"Pheulpin"  
has signed the  
drawing and his  
name appears  
from the issued  
stamp but not  
from the  
drawing where  
the artist has  
written  
"Graveur" only*





- and we can use them in sporting Events  
- as well as Birds-of-Prey and fishing Cormorants

Hand painted Essay by  
"Thomas De La Rue & Company Limited"

(e)



*Falconry*  
is a sport which  
involves the use of  
trained *Falcons* or  
*Eagles* to hunt or  
pursue game



*Falconry* was  
probably  
introduced to  
Europe around  
AD 400, when  
the Huns and  
Alans invaded  
from the East

© Thomas De La Rue & Company Limited.

**RRR - Below:** Letter sent from Boulogne-sur-Mer in Northern France on 3rd October, 1856, to London informing the addressee that a parcel had been sent from Lyon through "Faulkner's" in Folkstone

Letter is endorsed "Faulkner's Continental Parcel Office, Folkstone", which was an agent with contacts in other European countries from where mail and parcels to England were collected and sent via Folkstone to the recipients

The letter is franked in Folkstone with 1d only. If it had been franked in France it would have cost the equivalence of 4d



"Faulkner"  
is one of the  
spellings of old  
occupational  
English names  
for someone  
who kept and  
trained  
Falcons  
i.e. a  
Falconer



- and we can use them in sporting Events  
 - as well as Birds-of-Prey and fishing Cormorants



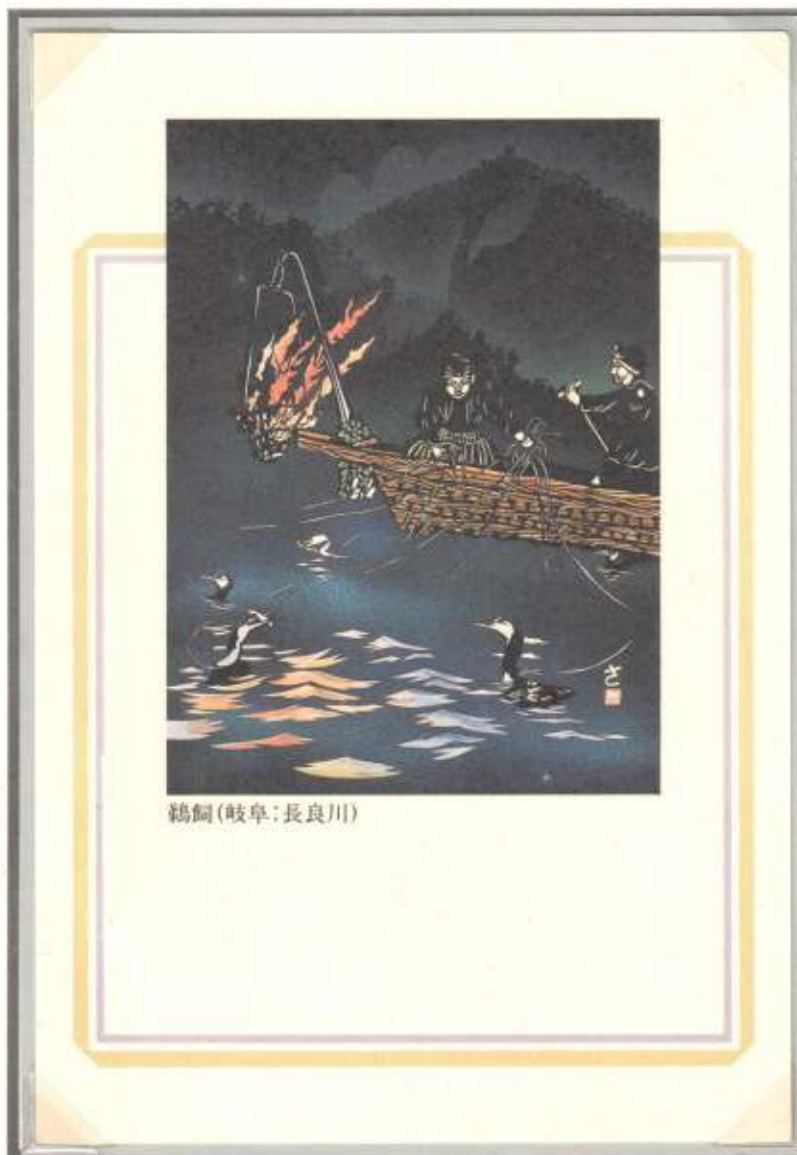
Military Postal Stationery –Japan for use during WWII.

Though *Cormorant Fishing* once was a successful industry, its primary use today is to serve the tourism industry

The fishermen tie a snare near the base of the bird's throat

This prevents the birds from swallowing larger fish, which are held in their throat, but the birds can swallow smaller fish

Postal Stationery  
 Japan  
 40Y



鶴飼(岐阜:長良川)

When a *cormorant* has caught a fish in its throat, the fisherman brings the bird back to the boat where it is forced to disgorge the fish

*Cormorant fishing* has continued uninterrupted for the past 1,300 years

Historically, *cormorant fishing* has taken place in Japan and China, as well as other places throughout the world

Specimen





We have great many Doings – and there are Animals helping us to accomplish most



Artwork for stamp shown to the left depicting a satellite - From the Fournier Archive – designer F.L.Lamosas

The days are over when scientific studies were carried out only by scientists working in the field with physical contact with the creatures they were studying

Nowadays f. inst. *Penguins* and *Turtles* are equipped with small *Radio Transmitters* and tracked by satellites

When their breeding obligations are over and they leave land it has previously been impossible for the scientists to track them in order to find out where they live between breeding seasons

Satellite tracking is revealing the migratory pathways and destinations of penguins and turtles, information essential for their conservation



Results of this tracking show that penguins undergo winter migrations of not less than 5000 km





- and for many other Purposes  
 - like Pigeons, which are used for several Purposes



Enlarged copy

Below: A microfilmed message carried by a carrier pigeon out of Paris during the Prussian siege in 1870



e

*Homing Pigeons* are not used only in peaceful times

During the Prussian Siege of Paris in 1870, a large number of *Pigeons* were used to send messages out of the city

The *Homing Pigeon* is trained to return to its dovecot after it has been sent to a place for release which may be several hundred kilometres away

When used in competitions it will normally not carry any messages but a small cylinder with a piece of very thin paper (a *Flimsy*) can be tied to a leg before it is released for its flight home



A *Flimsy* used at a flying competition



The above stamp was flown from Great Barrier island to the Pigeon Loft at Newton Road in Auckland City

- a distance of 45-60 miles depending what part of the island the pigeon was launched from

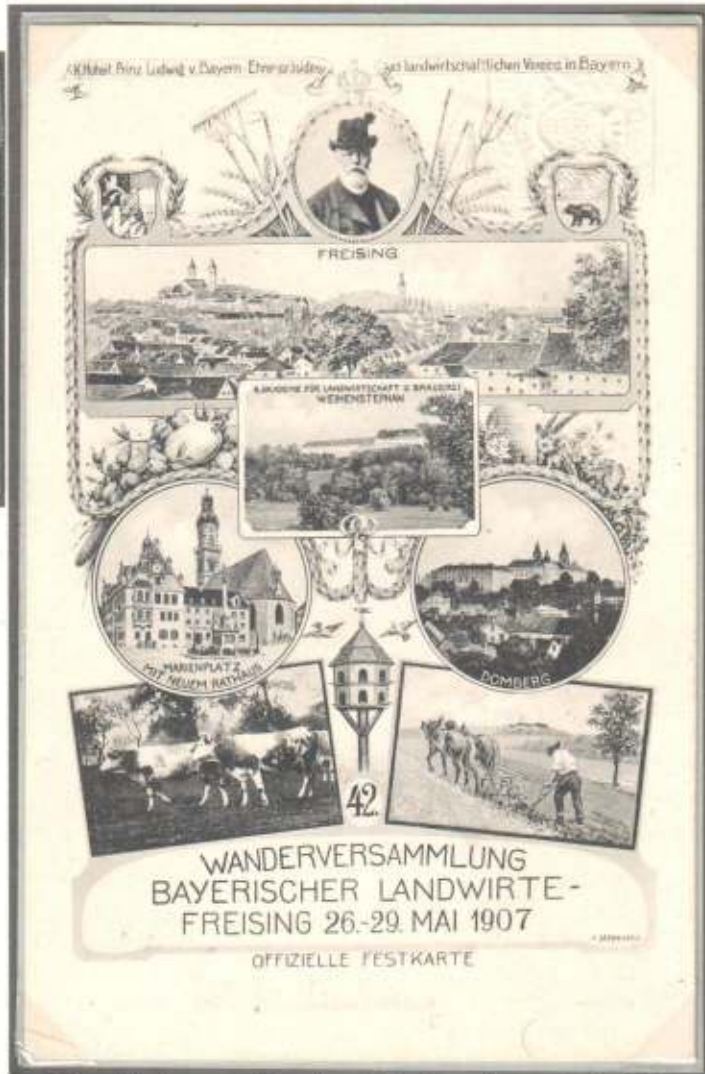
The Barrier Island Pigeongram Service started on the Barrier after the ship "Wairarapa" was wrecked off the coast. The service was provided by two rival pigeongram services, and they operated only from Great Barrier Island to Auckland

- the reverse route being considered uneconomic





- and for many other Purposes  
 - like Pigeons, which are used for several Purposes



One ornamental breed of pigeons, the *White Dove*, which is a subspecies of the Homing Pigeon, has achieved the honour of being regarded as the "*Symbol of Peace*"

To the Egyptians the white dove was a symbol of quiet innocence and to the Chinese a symbol of peace and long life

Postal Stationery – Bavaria – (printed to private order) – 5 Pf

Postal Stationery – Denmark – 1908 - 5 Øre

